

**Bid Document
for
Work of Chain – Link Fencing Across the
Boundary of 35 MW Kanpur Nagar Solar
Park at village Katar Tehsil Ghatampur
District Kanpur Nagar (U.P.).**



Tender Ref. No.LSPDCL/3/works-35 MW solar Park/2026

Dated: 2 /4/ 2026

Issued By:

LUCKNOW SOLAR POWER DEVELOPMENT CORPORATION LIMITED (LSPDCL)

(A Joint Venture of Uttar Pradesh New and Renewable Energy Development Agency (UPNEDA) and Solar Energy Corporation of India Limited New Delhi)

3rd Floor, LSPDCL building, Vibhuti Khand, Gomti Nagar Lucknow- 226010

Mob. No. 91-9839017624, Tel.No 0522-2720652

Web site: www.upneda.org.in/ www.lspdcl.co.in

DISCLAIMER

The information contained in this Bid document, and any information subsequently provided to the Bidders, whether verbally, in writing, or in any other form by or on behalf of Lucknow Solar Power Development Corporation Limited (LSPDCL) or any of its employees, representatives, or advisers, is provided to the Bidders solely on the terms and conditions set out in this BID and any other conditions subject to which such information is supplied.

This BID DOCUMENT does not constitute an agreement, offer, or invitation to enter into any contract on the part of LSPDCL. Its sole purpose is to provide prospective Bidders with information that may assist them in preparing and submitting their proposals for the chain link fencing works at the Solar Park as specified in this BID DOCUMENT.

This document may include assumptions, statements, assessments, and estimates made by LSPDCL in relation to the proposed scope of work. Such information is not intended to be exhaustive and may not be adequate, complete, accurate, or free from errors. LSPDCL, its employees, and advisers do not make any representation or warranty, express or implied, and shall have no liability for the accuracy, adequacy, completeness, or correctness of the information, assumptions, or statements contained herein.

Each Bidder is advised to conduct its own investigations, due diligence, analysis, and assessment of the information contained in this BID DOCUMENT. Bidders are expected to verify all data, details, and information independently and obtain professional advice, wherever necessary, before submitting their proposals. The information provided in this BID DOCUMENT may include interpretations of statutory provisions. Such interpretations should not be treated as authoritative or comprehensive statements of law. LSPDCL shall not be responsible for any legal interpretation or opinion expressed or implied in this document.

LSPDCL, its officers, employees, and advisers shall not be liable under any law, statute, regulation, or principles of tort, restitution, or unjust enrichment for any loss, damage, cost, or expense incurred by any person, including the Bidders, arising from anything contained in this BID DOCUMENT or otherwise in connection with the bidding process, including reliance on the accuracy or completeness of the information.

LSPDCL reserves the right, at its sole discretion and without any obligation, to amend, modify, or supplement the information, assumptions, or terms provided in this BID DOCUMENT at any stage of the selection process. The issuance of this BID DOCUMENT does not imply that LSPDCL is bound to select any Bidder or award the contract for the chain link fencing work. LSPDCL reserves the right to accept or reject any or all proposals, at any stage, without assigning any reason whatsoever. The decision of LSPDCL in this regard shall be final and binding.

All costs and expenses associated with the preparation and submission of the Bid, including but not limited to documentation, surveys, site visits, presentations, and liaison activities, shall be borne entirely by the Bidder. LSPDCL shall not be liable in any manner for such costs, regardless of the outcome of the bidding process.

Contents

<i>SECTION 1: NOTICE INVITING TENDER (NIT)</i>	4
<i>SECTION 2 : INSTRUCTION TO BIDDERS (ITB)</i>	6
<i>SECTION 3: ELIGIBILITY & QUALIFICATION CRITERIA</i>	25
<i>SECTION 4: GENERAL CONDITIONS OF CONTRACT (GCC)</i>	28
<i>SECTION 5 : SPECIAL CONDITIONS OF CONTRACT (SCC)</i>	365
<i>SECTION 6: TECHNICAL SPECIFICATIONS</i>	39
<i>SECTION 7: FORMATS AND ANNEXURE</i>	55
<i>APENDIX-1: DOCUMENT CHECKLIST</i>	56
Form – 1 Format for Covering Letter.....	57
Form – 2 Information About Bidding Firm.....	58
Form – 3 Declaration by The Bidder	59
Form – 4 Format for Power of Attorney for Bidding Company	61
Form – 5 Authorized Contact Person for the Bid	62
Form – 6 Format of No Deviation Certificate	63
Form – 7 Format for Financial Requirement – Minimum Average Annual Turnover.....	64
Form – 8 Format for Financial Requirement – Net Worth Certificate.....	65
Form – 9 Project Experience Requirement.....	66
Form – 10 Format of Details of Qualified Technical Staff	67
Form – 11 Format for Declaration of Compliance	69
Form – 12 Blacklisting Affidavit.....	70
Form – 13 Price Bid.....	71
Form – 13.1 PRELIMINARY ESTIMATE OF COST OF CHAIN LINK FENCING PROJECT	72
Form – 14 Format for Bid Security Declaration	74
ANNEXURE-1: DELIVERY REPORT FORMAT	75
ANNEXURE-2: PROJECT COMPLETION CERTIFICATE	75
ANNEXURE-3: Earnest Money Deposit	78
ANNEXURE-4: FORMAT FOR PERFORMANCE BANK GUARANTEE (PBG).....	81
ANNEXURE-5: PROJECT SITE LOCATION.....	82
ANNEXURE-6: DRAWINGS.....	84

SECTION 1: NOTICE INVITING TENDER (NIT)

LUCKNOW SOLAR POWER DEVELOPMENT CORPORATION LIMITED (LSPDCL)
(A Joint Venture of Uttar Pradesh New and Renewable Energy Development Agency (UPNEDA)
and Solar Energy Corporation of India Limited New Delhi)

3rd Floor, LSPDCL building, Vibhuti Khand, Gomti Nagar Lucknow- 226010

Mob. No. 91-9839017624, Tel.No 0522-3119549

Web site: www.upneda.org.in/ www.lspdcl.co.in

E-Mail: lspdcl2015@gmail.com/ho_nmk@rediffmail.com

NOTICE INVITING E-TENDER

LSPDCL invites Online Bids (e-tenders) through open tendering under **Single Stage Two Envelope Bidding System**, from the eligible Bidders for **Work of Chain – Link Fencing Across the Boundary of 35 MW Kanpur Nagar Solar Park at village Katar Tehsil Ghatampur District Kanpur Nagar (U.P.)**.

Tender Document can be viewed and downloaded from e-Procurement website <http://etender.up.nic.in> and UP Electronics Corporation's website www.uplc.in from 7/4/2026. Interested bidders may view, download the e-tender document, seek clarification, and submit their e-tender online up to the date and time mentioned in the **Bid Information Table**:

S. No.	Item	Details
1	BID DOCUMENT No.	LSPDCL/3/works-35 MW solar Park/2026 dated 2.4.2026
	Particulars of the work	Work of Chain – Link Fencing Across the Boundary of 35 MW Kanpur Nagar Solar Park at village Katar Tehsil Ghatampur District Kanpur Nagar (U.P.).
2	Tentative Quantity (Mtr.)	7500
3	Period of Work	Within 6 months form the date of Issuance of LoA
4	Document Fee / Cost of Bid Document (Non-Refundable)	₹29,500 (inclusive of 18% GST). Scanned copy of UTR details for RTGS/NEFT transaction to LSPDCL account shall be provided as proof of payment.
5	Bid Security / Earnest Money Deposit (EMD)	₹5,15,000 (Five Lakh Fifteen Thousand Only) in the form of Bank Guarantee prescribed format at Annexure-3. For MSEs bidders, Bid Security Declaration on non-judicial stamp paper (as prescribed in Form -14) shall be required to furnish to avail the exemption of Bid Security/ Earnest Money Deposit (EMD).
6	Performance Bank Guarantee (PBG)	5% of LoA value in the form of Performance Bank Guarantee (PBG) as prescribed at Annexure-4.
7	Availability of BID DOCUMENT	From 07/04/2026 on e-Procurement website http://etender.up.nic.in and only for viewing on LSPDCL websites www.upneda.org.in / www.lspdcl.co.in
8	DATE, TIME & VENUE OF PRE-BID MEETING	Office of Lucknow Solar Power Development Corporation Limited, Vibhuti Khand, Gomti Nagar, Lucknow (U.P.) – 226010. 21/04/2026 at 12:30 PM in Hybrid Mode link and venue details as will be available on LSPDCL website www.lspdcl.co.in .
9	Last date for receipt of queries	23/04/2026 till 6:00 PM.
10	Online Bid Submission Deadline	06/5/2026 up to 6:55 PM
11	Offli	

11	Techno-Commercial Bid Opening	07/5/2026 at 12:30 PM .
12	Financial Bid Opening	To be communicated.
13	Period of validity of Bid	120 days from the last date of submission of response to e-tender
14	Submission Address	All communications including the submission of hard copy of offer should be addressed to Chief Executive Officer (CEO), LSPDCL, 3rd Floor, UPNEDA Building, Vibhuti Khand, Gomti Nagar, Lucknow. Phone: 0522-3119549 Email: lspdcl2015@gmail.com Website: www.lspdcl.co.in
15	Contact Person	Ms. Namrata Kalra, General Manager, LSPDCL, 3rd Floor, UPNEDA Bhawan, Vibhuti Khand, Gomti Nagar, Lucknow – 226010. Email: lspdcl2015@gmail.com Mob No :9839017624

- a. The companies/firms who are registered at e-Procurement portal for e-tendering with U.P. Electronics Corporation Ltd. (UPLC), 10, Ashok Marg, Lucknow (UP) would only be eligible for participating in this e-RFP. All companies/firms who have not registered themselves with UPLC for e-tendering till date can get their registration done. The companies/firms may contact the UPLC officials on phone numbers 0522-2286809, 0522-2288750 (O) 0522-4130303 (Extn: 303, 304 & 307), for their Registration/Digital Signature Certificate related queries.
- b. Bidders shall upload clear, complete, and legible scanned copies of proof of payment of the e-tender fee (RTGS/NEFT UTR details) and the Earnest Money Deposit (EMD) furnished in the form of a Bank Guarantee in favour of the LSPDCL, payable at Lucknow. Unreadable, blurred, or incomplete scanned documents may result in rejection of the bid.
- c. Bidders are advised to carefully study the Tender Document in its entirety. Submission of a Bid shall be deemed to constitute full understanding of all procedures, terms, conditions, and implications of the Tender Document.
- d. The original Bank Guarantee, tender fee and the hard copy of the blank tender document with all enclosures duly signed by the bidder must reach the office of LSPDCL at Vibhuti Khand, Gomti Nagar, Lucknow, before the bid opening date and time the scheduled deadline. Failure to comply with this requirement shall result in the tender not being considered. Chairman Lucknow Solar Power Development Corporation Ltd. (LSPDCL) reserves the right to reject any or all tenders without assigning any reason thereof. The decision of Chairman (LSPDCL) will be final and binding.
- e. All the required documents including Price Schedule/BOQ should be uploaded by the e-tenderer electronically in the PDF/XLS format. The required electronic documents for each document label of Technical (Fee details, Qualification details, e-tender Form and Technical Specification details) schedules/packets can be clubbed together to make single different files for each label. All the enclosures should be scanned and uploaded with bid.

Chairman, LSPDCL

**SECTION 2: INSTRUCTION TO BIDDERS
(ITB)**

SECTION 2 : INSTRUCTION TO BIDDERS (ITB)

2.1 Background :

Lucknow Solar Power Development Corporation Ltd (LSPDCL) as Solar Power Park Developer is developing a 35 MW Solar Power Park in village Katar, tehsil Ghatampur district Kanpur Nagar. Sanction from Ministry of New and Renewable Energy (MNRE) has been received to develop this Solar Park as Solar Power Park Developer (SPPD) under Ministry's scheme of "Development of Solar Power Parks and Ultra Mega Power Plants"

Government Land Parcel of about 164.5 acre has been obtained on lease basis Under State Solar Energy Policy -2022. It is proposed to carry out Chain Link fencing work of leased land for security and land demarcation purpose.

2.2 Instruction to Bidders :

- 2.2.1 All the prospective bidders are informed that tender document may be viewed and download from e-Procurement website <http://etender.up.nic.in> and official LSPDCL website (www.lspdcl.co.in) and recommended Submit all bids only via e-Procurement website <http://etender.up.nic.in>. Interested bidders may download the Tender Document after registering for e-tendering on the mentioned portal.
- 2.2.2 Bidders are required to submit their proposals electronically via the e-Procurement website, ensuring all documentation and forms are uploaded as per the instructions provided in this bid document. The completion period for the entire Work of Chain – Link Fencing across the Boundary of 35 MW Kanpur Nagar Solar Park at village Katar Tehsil Ghatampur District Kanpur Nagar (U.P.), is set at 180 days from the issuance of the Letter of Award (LoA).
- 2.2.3 A Performance Bank Guarantee (PBG) equivalent to 5% of the total contract value shall be furnished by the selected bidder within fifteen (15) days of Letter of Award, as in the prescribed format. All communication and clarifications regarding the tender must be routed through the designated contact points listed in the annexures. Bidders are advised to review the detailed requirements, technical specifications, compliance sheets, and payment terms to ensure their submissions are complete and responsive.
- 2.2.4 Any corrigendum, subsequent amendments and / or extension date, if any, for submission of Bids shall be posted on the portal <http://etender.up.nic.in> and LSPDCL website www.lspdcl.co.in. Bidder(s) are advised to visit the portal regularly and be aware of the latest information before the deadline for submission of Bids.
- 2.2.5 LSPDCL reserves the absolute and unconditional right, at its sole discretion, to accept or reject any Bid, and/or to annul, cancel, or withdraw the Bidding Process, in whole or in part, at any time prior to the issuance of the Letter of Award, without assigning any reason whatsoever and without incurring any liability or obligation to the affected Bidder(s).

2.3 **TENDER FEE (Non – Refundable)**

Prospective Bidders interested in participating in the bidding process are required to download the tender document from the e-procurement website <http://etender.up.nic.in> and UP Electronics Corporation's website www.uplc.in. Cost of tender /bid document is: INR 25,000/+18%GST=INR 29500/- (Rs. Twenty-nine thousand and five hundred only) inclusive of GST. Tender fee including GST is to be submitted either through NEFT/ RTGS transferred in the account of LSPDCL, or in the form of DD/ Pay Order. In case the Bidder chooses to submit the amounts pertaining to Cost of Bid document Fee through NEFT/RTGS (Electronic Transfer), the Bidder shall enter the details of UTR along with payment transaction receipt as part of the offline bid submission. The bids submitted without cost of the Bid Document are liable for rejection by LSPDCL. In the event of any dates indicated is a declared Holiday, the next working day shall become operative for the respective purpose mentioned herein.

Following mentioned bank details of LSPDCL shall be considered for any NEFT/ RTGS transactions:

Field	Details
Name & Address of Account Holder	Lucknow Solar Power Development Corporation Limited
Bank Name & Branch	Punjab National Bank, RKU Mandi Parishad, Gomti Nagar, Lucknow (U.P.) – 226010
Email	lspdcl2015@gmail.com
Account Number	6194002100000137
IFSC Code	PUNB0619400
MICR Code	226024040

Note: It is advised to all prospective bidders to independently verify the account details with LSPDCL before remittance, LSPDCL shall not be liable for any error or transaction failure.

2.4 Bid Security (Earnest Money)

2.4.1 The Tenderer shall submit an Earnest Money Deposit (EMD) of Rs. 5,15,000/- (Rupees Five Lakh Fifteen Thousand Only) along with the Technical Bid.

2.4.2 The EMD shall be submitted in the form of Bank Guarantee (as prescribed in Annexure-3) in favour of Lucknow Solar Power Development Corporation Limited (LSPDCL). The bank guarantee shall be valid for a period of 6 (Six) months from the date of opening of technical bid.

2.4.3 Bank Guarantee for EMD should be issued from any of the Scheduled Commercial Banks as listed on the website of Reserve Bank of India (RBI) and amended as on the date of issuance of bank guarantee.

2.4.4 Original of Bank Guarantee should be submitted along with offline Bid documents at the LSPDCL office before opening date and time of online Technical Bid without which the online Bid of concern Bidder will not be opened.

2.4.5 The EMD shall not be accepted in any form other than those specified above. Tenders received without the requisite EMD shall be treated as non-responsive and shall be summarily rejected.

2.4.6 *Bidders registered as MSEs in Uttar Pradesh and holding a valid NSIC/Udyam registration for Civil Works or relevant product categories shall be exempted from submitting the EMD, as per Ministry of Finance directives. Such bidders must submit a 'Bid Security Declaration' on non-judicial stamp paper as per Form-14 and upload a self-attested valid Udyam Registration Certificate in lieu of EMD. Failure to provide a valid MSME/Udyam certificate will render the bidder ineligible for EMD exemption, and their bid shall be treated as non-responsive.*

2.4.7 No Interest shall be payable on the amount of earnest money.

2.4.8 The bid security will be released after the e-tenders have been decided, to those Bidders who fail to get the contract within thirty days.

2.4.9 Bid security of successful bidder shall only be released after signing of agreement and submission of 5 % Performance Guarantee.

2.4.10 The EMD shall be liable for forfeiture by LSPDCL, without prejudice to any other rights or remedies available under the Contract or law, under the following circumstances:

- If the Bidder withdraws the bid during the validity period or any agreed extension thereof.

- b) If the Bidder modifies or alters the bid in a manner not acceptable to LSPDCL during the validity period.
- c) If the successful Bidder fails to sign the Contract Agreement within the stipulated time.
- d) If the successful Bidder fails to furnish the required Security Deposit / Performance Bank Guarantee as per Contract conditions.
- e) If the Bidder is found to have submitted false information or is debarred/blacklisted by LSPDCL or any Government authority during the tender process.

In such cases, the defaulting Bidder may also be debarred from participating in re-tendering of the same work or future tenders of LSPDCL, as decided by the Competent Authority.

2.5 Submission of Bid-Two-Bid System Compliance

- (i) The tender shall be processed under the Two-Bid System, comprising Technical Bid and Financial Bid, to be submitted separately and distinctly on the e-procurement portal in accordance with the prescribed format and instructions.
- (ii) The Technical Bid shall include documents relating to eligibility, experience, technical capability, compliance with specifications, statutory registrations, and declarations, while the Financial Bid shall contain only the price schedule/BOQ in excel.

Any inter-mixing of technical and financial information, or deviation from the prescribed two-bid submission procedure, shall render the bid liable to rejection.

2.6 Language of the bid:

The bid prepared by the bidder, including all correspondences and documents relating to the bid, exchanged between the bidder and the LSPDCL shall be written in the **English Language**, provided that any printed literature furnished by the bidder may be written in another language so long as accompanied by an English translation of its pertinent passages. Failure to comply with this, submitted bid may be treated as non-responsive. For purposes of interpretation of the bid, the English translation shall govern.

2.7 Documents constituting the bid

The bid to be prepared and submitted by the bidder online shall consist of the following documents:

S. No.	Qualification / Technical Bid (First Envelope): Online Submission	
1	Checklist for Technical Bid (All documents mentioned in checklist should be mandatorily uploaded)	Appendix 1
2	Covering Letter	Form 1
3	Information about the bidding firm	Form 2
4	Declaration by the bidder	Form 3
5	Power of attorney for bidding company	Form 4
6	Authorized Contact Person responsible for Bid submission	Form 5
7	Format of No Deviation Certificate	Form 6
8	Financial Capability Requirement: CA Certificate indicating average minimum annual turnover of during the last three financial years from FY 2022-23 FY 2023-24 & FY 2024-25 or FY 2023-24, FY 2024-25 & FY 2025-26	Form 7
9	Financial Capability Requirement: CA Certificate for Net Worth As on 31st March 2025 or 31st March 2026	Form 8
10	Annual Audited Actual Balance Sheets, Profit & Loss Statement and ITR for FY 2022-23 FY 2023-24 & FY 2024-25 or FY 2023-24, FY 2024-25 & FY 2025-26	
11	Technical Capability Requirement: Details of Orders Received and	Form 9

	Executed in Last Seven (07) Years	
12	Format of Details of Qualified Technical Staff for the proposed Scope of Work along with Educational and Experience certificates	Form 10
13	Format of Declaration of Compliance	Form 11
14	Declaration by the bidder towards non-Blacklisting/ Debars (on non-judicial stamp paper)	Form 12
15	Preliminary Estimate of Cost of Chain Link Fencing Project	Form 13.1
16	Bid Security Declaration	Form 14
Price Bid (Second Envelope): Online Submission only		
17	Duly Quoted & digitally signed Bill of Quantity (BOQ) in the file supplied by LSPDCL in. xls. Format (Price Bid part shall not be submitted with Technical Bid part) If Price bid is submitted with the technical part, bids shall be rejected by LSPDCL	Form 13
Other Documents (Scan Copy for Online Upload)		
18	Original scan copy of Demand Draft/ Online payments towards Bid Document Fee in favour of Chief Executive Officer (CEO), LSPDCL. The LSPDCL bank account details are provided in bid document for online RTGS/ NEFT Transaction.	
19	Original scan copy of Demand Draft in favour of "Chief Executive Officer (CEO), LSPDCL" payable at Lucknow.	
20	Firm's Registration Certificate Company /Pvt. Ltd. / Proprietorship firm/ corporation.	
21	Self-Attested Original scan copy of GST, PAN, PF and ESI certificates issued in the name of bidding firm	

Note: Bidders shall upload all required bid documents in the e-tender portal only. All scanned documents must be clearly legible, complete, and readable. In case any uploaded document is found blurred, unreadable, incomplete, or unclear, the bid may be liable for rejection.

2.8 PERFORMANCE BANK GUARANTEE

- (i) The Successful Bidder shall, within fifteen (15) days of the issuance of the Letter of Acceptance, furnish a Performance Bank Guarantee amounting to five percent (5%) of the total contract value. The Bank Guarantee will be
- (ii) The PBG shall remain valid until Ninety (90) days beyond the expiry of the Defect Liability Period.(18 months from LOA). The Performance Security shall not be released until the full recovery of any outstanding liquidated damages, if applicable. In the event the contractor is unable to submit the Performance Bank Guarantee within the prescribed period due to any valid and justified reason, LSPDCL at its discretion may grant an extension of time for submission of the said Performance Bank Guarantee.
- (iii) No claim for extension of time for completion period or any other type of claim on account of delayed submission of performance security shall be entertained.
- (iv) If contractor fails to submit the Performance Bank Guarantee within 30 days (in case of extension provided) from the date of issue of Letter of Award (LOA), then **following actions shall be taken against such Contractor:**
 - a. Award shall summarily be terminated
 - b. EMD/ Bid security shall be forfeited.
 - c. The bidder shall be debarred / banned to participate in the business dealings with LSPDCL for a period of five year.
 - d. The name of the Contractor shall be hosted on the LSPDCL website etc. as per existing norms of Govt. of India.
 - e. Such defaulted contractor shall not be eligible to participate in the bidding process of re-tender of this work.

2.9 INSOLVENCY

- (i) The Bidder against whom an application for initiating corporate insolvency resolution process has been admitted by the Adjudicating Authority under the Insolvency and Bankruptcy code 2016 or as amended from time to time **shall not be eligible for bidding**. The same shall also be applicable to the bidder company who has taken unconditional technical and/or financial support from their Parent/ Holding Company, against whom an application for initiating corporate insolvency resolution process has been admitted by the Adjudicating Authority under the Insolvency and Bankruptcy Code 2016, or as amended from time to time (IBC 2016 hereafter).
- (ii) In case, bidder in respect of whom any application for initiating corporate insolvency resolution process was not admitted at the time of submission of bid but subsequently during the period of evaluation of bids or any time before the work is awarded, any such application is admitted by the Adjudicating Authority under the IBC 2016, the bidder shall be considered as ineligible, and his bid shall be rejected.
- (iii) An undertaking that **“no insolvency proceedings is admitted by the Adjudicating Authority against bidder under the IBC 2016”** shall be submitted on letter head duly signed by the authorized representative of bidder. Further, the bidder after submitting the bid till the time of award of work, shall inform LSPDCL regarding any admission of application for corporate insolvency resolution process by the Adjudicating Authority under the IBC 2016 against bidder and any suppression of such fact shall render the bidder liable for rejection of his bid and banning of business dealing as per terms and conditions of the Bid Document.

2.10 DISQUALIFICATION:

Even though the bidders meet the qualifying criteria, they are subject to be disqualified if they have:

- (i) Made misleading or false representations in the forms, statements, affidavits, declarations and attachments submitted in proof of the qualification requirements; and/or,
- (ii) Participated in any bidding for the same work & found L-1 and have quoted abnormally high or low bid prices and could not furnish rational justification for it to the Tendering Authority.
- (iii) The Bidders whose contract(s) have been terminated due to unsatisfactory performance by tendering authority in past, shall not be allowed to participate in the bidding process till completion of the ineligibility period. In such case the bid shall be considered non-responsive.

2.11 COST OF BIDDING

The Bidder shall bear all costs associated with the preparation and submission of his Bid, and the LSPDCL will, in no case, be responsible or liable for those costs, regardless of the outcome of the Bidding process.

2.12 Site Visit

- 2.12.1 The tenderers, in their own interest, should inspect and examine the site and its surroundings and satisfy themselves, before submitting their tender, in respect of the site conditions including but not restricted to the following which may influence or affect the work or cost thereof under the Contract:
- a) Site conditions including access to the site, existing and required roads and other means of transport/communication for use by them in connection with the works.
 - b) Requirement and availability of land and other facilities for their enabling works, colonies, stores and workshops etc.

- c) Ground conditions including those bearing upon transportation, disposal, handling and storage of materials required for the work or obtained therefrom.
- d) Source and extent of availability of suitable materials including water, etc. and labour (skilled and un- skilled), required for work and Laws and Regulations governing their use and employment.
- e) Geological, meteorological, topographical and other general features of the site and its surroundings as are pertaining to and needed for the performance of the work.
- f) The limit and extent of surface and sub-surface water to be encountered during the performance of the work and the requirement of drainage and pumping.
- g) The type of equipment and facilities needed, preliminary to, for and in the performance of the work; and
- h) All other information pertaining to and needed for the work including information as to the risks, contingencies and other circumstances which may influence or affect the work or the cost thereof under this contract.

2.12.2 The tenderers should note that information, if any, in regard to the site and local conditions, in this tender document, except for the material agreed to be supplied by the LSPDCL, have been given merely to assist the tenderers and are not warranted to be complete.

2.12.3 The tenderers should note that the LSPDCL shall bear no responsibility for the lack of acquaintance of the site and other conditions or any information relating thereto, on their part. The consequences of the lack of any knowledge, as aforesaid, on the part of the tenderers shall be at their risk and cost and no charges or claims whatsoever consequent upon the lack of any information, knowledge or understanding shall be entertained or payable by the LSPDCL.

2.12.4 The Bidders should note that the cost of visiting the site shall be at the Bidder's own expenses. In any case LSPDCL shall not be responsible for any monetary compensation.

2.12.5 Contact detail for site visit and related queries may be written to General Manager, LSPDCL (Email: lspdcl2015@gmail.com mob no 9839017624) and may also contact Shri Rakesh Pandey (Project Officer) responsible for ground support for 35 MW Kanpur Nagar Solar Park at his contact no. +91- 9415609050.

2.13 Personnel and Organizational Set-up:

- (i) Bidders must have qualified technical personnel on their payroll or engaged under contract, capable of executing the scope of work. Details and qualifications of key personnel must be included in the bid as in the prescribed format along with their educational and experience certificates.
- (ii) Site specific Organizational structure, including project manager, engineers, supervisors, and support staff, shall be provided as part of the technical bid.

2.14 Statutory and Regulatory Compliance:

- (i) Bidders must comply with all relevant statutory requirements, including but not limited to labor laws, environmental regulations, safety codes, and quality standards applicable to construction and installation works.
- (ii) Proof of compliance with Employees Provident Fund (EPF), Employees State Insurance (ESI), and other statutory registrations as applicable must be submitted.

2.15 Miscellaneous Requirements:

- (i) Bidders must submit a signed and stamped copy of the tender document, accepting all terms and conditions therein. Copy of tender document may be submitted offline or online uploaded with technical bid.

- (ii) Any false declaration or failure to meet eligibility criteria may result in rejection of the bid and forfeiture of EMD.
- (iii) The Procuring Entity reserves the absolute right to seek additional documents or clarifications for verification of eligibility and qualifications, without assigning any reason.

2.16 Content of Bidding Documents

- (i) The set of bidding documents comprises the documents listed below and Corrigendum / Addendum issued in accordance with Clause 2.18 of ITB.

Section 1	NOTICE INVITING TENDER (NIT)
Section 2	INSTRUCTIONS TO BIDDERS (ITB)
Section 3	ELIGIBILITY & QUALIFICATION CRITERIA
Section 4	GENERAL CONDITIONS OF CONTRACT (GCC)
Section 5	SPECIAL CONDITIONS OF CONTRACT (SCC)
Section 6	TECHNICAL SPECIFICATION
Section 7	FORMATS AND ANNEXURE

- (ii) The bidder must thoroughly review all instructions, forms, schedules of quantities and prices, qualification details, contractual conditions (both General and Special), specifications, and drawings contained in the Bid Document. Any failure to meet the requirements of the Bid Document will be solely at the bidder’s risk. In accordance with Clause 2.25.3 any bid that is not substantially responsive to these requirements shall be rejected.

2.17 Clarification /Enquiries / Pre-bid Meeting

- (a) The Bidder(s) or their authorized representative(s) is / are invited to attend Pre-Bid meeting. LSPDCL will make all efforts to respond to the queries during the Pre-Bid Meeting to be held on 21/4/2026 at 12.30 PM at LSPDCL Office, Lucknow. The Prebid meeting will be held in hybrid mode. Link for joining the Prebid meeting will be available on www.lspdcl.co.in
- (b) The purpose of the pre-bid meeting will be to clarify any issues regarding the Tender document including in particular, issues raised in writing by the Bidders and e mailed at lspdcl2015@gmail.com prior to Pre-Bid meeting or during the Pre Bid meeting .
- (c) Last date for seeking clarification is 23/4/2026. LSPDCL has no obligation to respond to requests for clarification submitted after the above-specified timelines. Furthermore, submission of a clarification request shall not constitute grounds for seeking an extension of the bid submission deadline.
- (d) A compiled list of questionnaires and LSPDCL response will be uploaded on the website of LSPDCL www.lspdcl.co.in for information of all concerned. All are requested to remain updated with the website. No separate reply/ intimation will be given elsewhere.
 However, it may please be noted carefully that the Pre-Bid meeting will be held only with the authorized representatives of the bidders. Only two representatives from each Bidding Company shall be allowed for Pre Bid discussions.
- (e) LSPDCL reserves the right to interpret the Bid submitted by the Bidder in accordance with the provisions of this tender document and make its own judgment regarding the interpretation of the same. In this regard LSPDCL shall have no liability towards any Bidder and no Bidder shall have any recourse to LSPDCL with respect to the selection process. LSPDCL shall evaluate the Bids using the evaluation process specified in Section-6.3, at its sole discretion. LSPDCL decision in this regard shall be final and binding on the Bidders.

2.18 Amendment to Bidding Documents

- (i) At any time prior to the deadline for submission of bids, the LSPDCL may modify the Bidding Documents by issuing an Addendum. Such modifications may be made on the LSPDCL's own initiative or in response to a clarification request from a prospective Bidder.
- (ii) All corrigendum / addendum issued prior to bid submission shall be uploaded on the e-Procurement Portal (<http://etender.up.nic.in>) as well as the LSPDCL's website (www.lspdcl.co.in). These documents shall form an integral part of the Bidding Documents. Prospective bidders are required to regularly check the aforementioned portals for updates and are deemed to have examined all amendments, corrigenda, and clarifications published prior to submitting their bids.
- (iii) To allow bidders sufficient time to consider an addendum while preparing their bids, the LSPDCL shall, where necessary, extend the bid submission deadline or may annul the bidding process without assigning any reason what so ever.

2.19 Currencies of Bid

The rates and the prices shall be quoted by the bidder entirely in Indian Rupees.

2.20 Preparation & Submission of Bids

The Bid shall be prepared and submitted in two parts, as specified herein. Submission of bids through any method other than that prescribed shall not be accepted by the tendering authority under any circumstances. The start date for bid submission and the deadline for submission shall be as indicated in the NIT.

The Bidder shall ensure that all documents uploaded online, as well as any offline documents forming part of the bid, are duly signed and sealed by the authorized representative of the Bidder, who must hold a valid Power of Attorney.

2.20.1 Online Submission:

Cover -I: This shall be named "Technical Bid". No bid price related information shall be mentioned in the Technical Bid. Techno-commercial Bid shall comprise;

- i. Checklist for Technical Bid : **Appendix - 1**
- ii. Covering Letter : **Form -1**
- iii. Information About the Bidding Firm : **Form-2**
- iv. Declaration by the Bidder : **Form-3**
- v. Power of Attorney authorizing the person signing the bid : **Form-4**
- vi. Details of Authorized Contact Person responsible for bid submission : **Form-5**
- vii. No-Deviation Certificate : **Form-6**
- viii. Financial Capability – Turnover : **Form-7**
 - CA Certificate showing average minimum annual turnover for FY 2022-23, 2023-24 & 2024-25
- ix. Financial Capability – Net Worth: CA Certificate showing Net Worth as on 31-03-2025: **Form-8**
 - Annual Audited Financial Statements & ITRs for FY 2022-23, 2023-24 & 2024-25
- x. Technical Capability: Details of Orders Received and Executed in the last Five (5) years: **Form-9**
- xi. Details of Qualified Technical Staff proposed for the scope of work, with Educational & Experience Certificates: **Form-10**
- xii. Declaration of Compliance: **Form-11**
- xiii. Declaration on Non-Blacklisting / Non-Debarment (on Non-Judicial Stamp Paper): **Form-12**

Cover-II: It shall be named "Financial Bid or Price Bid".

- (i) The Financial Bid shall be submitted only in electronic form on the e-Procurement portal, in BOQ format in excel .Submission of the Financial Bid by any other mode shall, under all circumstances, be unacceptable to the Tendering authority.
- (ii) If any cell in the BOQ is left blank or no rate is quoted for any item, the rate for such item(s) shall be deemed to be "0" (Zero). Such items will be considered as included in the total quoted bid price, and no separate claim or additional payment will be entertained for them.
- (iii) In the event the Tendering authority issues a corrigendum/addendum requiring submission of a revised Financial Bid, the bidder shall mandatorily submit the revised bid. In such a case, any Financial Bid submitted prior to the corrigendum/addendum shall be treated as invalid.

2.20.2 Offline Submission:

The Bidder shall submit the hard copy(ies) of the documents specified under clause 2.20.2.1 in one sealed envelope. The envelope shall be delivered either by hand or through registered post and must reach the LSPDCL by the date and time specified in the NIT.

Any envelope received late, i.e., after the prescribed deadline, shall not be accepted under any circumstances. The LSPDCL shall not be responsible for postal or courier delays.

2.20.2.1 Contents of the Sealed Envelope (Offline Submission)

The sealed envelope containing the hard copy(ies) documents shall be clearly marked as "Hard Copy(ies) of documents" for "Work of Chain – Link Fencing Across the Boundary of 35 MW Kanpur Nagar Solar Park at village Katar Tehsil Ghatampur District Kanpur Nagar (U.P.)"

The envelope shall contain the following documents:

- i. Cost of Tender Documents (Original): As specified in the NIT.
- ii. Earnest Money Deposit (Original): Bank Guarantee, as specified in NIT.
- iii. Power of Attorney & Board Resolution:
 - a. For Companies: Power of Attorney along with a certified copy of the Board Resolution.
 - b. For General Power of Attorney: A notarized true copy.
 - c. For Specific Power of Attorney: The original POA must be submitted.
 - d. For Proprietorship Firms: If the proprietor signs the bid, a notarized copy of proof of ownership must be submitted.
- iv) Any other certificates/documents as required under the ITB.

2.21 Validity of the offer

The offer shall be valid for a period of not less than 180 days from the last date of submission of response to invited Bid.

2.22 Extension of Deadline

The Tendering authority may, under exceptional circumstances and at its sole discretion, extend the deadline for submission of bids by issuing an amendment in accordance with Clause 2.18 of the ITB. In such cases, all rights and obligations of both the Tendering Authority and the bidders applicable to the original deadline shall automatically apply to the new extended deadline.

2.23 DSC Authorization on E-Procurement Portal

The e-procurement portal permits upload of the bid only through the Digital Signature Certificate (DSC) of a single registered individual. It shall be deemed that the legally authorized signatory of the

Bidder, whose DSC has been used for the upload, has validly carried out the bid submission on behalf of the Bidder.

2.24 Late Bids

If the hard copy(ies) of the offline documents are received by the LSPDCL after the deadline specified in the NIT, the submission shall be treated as a “Late Bid”, even if the Bidder has successfully uploaded the online bid within the stipulated timeline.

In such cases, the online bid uploaded on the portal shall be deemed non-responsive and will not be processed further.

2.25 Bid Opening, Evaluation & Comparison

2.25.1 Bid Opening

- (i) The Tendering authority will open all bids received on time, in the presence of bidders or their authorized representatives who wish to attend, at the date, time, and location specified in the NIT. If the scheduled opening date is declared a holiday, bids will be opened on the next working day at the same time and place.
- (ii) Cover-I (Technical Bid) will be opened first.
- (iii) The Technical Bids will be evaluated solely to determine whether each bidder meets the eligibility criteria defined in Clause 3.1,3.2 and Clause 3.3, and whether the bid is techno-commercially responsive. Only those bidders who meet these criteria will be considered “responsive” for the purpose of financial evaluation.
- (iv) Cover-II (Financial Bid) will be opened only for the bidders who are found eligible and techno-commercially responsive after evaluation of Technical Bids. The date and time of opening the Financial Bids will be informed separately. Bidders may attend or view the opening online through the e-Procurement Portal.
- (v) The Financial Bids of bidders who do not meet the eligibility criteria or are not techno-commercially responsive will not be opened and will be kept archived/ unopened.
- (vi) The Tendering authority, at its discretion, may open both Technical and Financial Bids simultaneously and evaluate the entire bid package.

2.25.2 Confidentiality

All information relating to bid examination, clarification, evaluation, and comparison shall remain confidential until the contract is awarded. Any attempt by a bidder to influence the tendering authority during this process may lead to rejection of the bid.

2.25.3 Examination of Bids and Determination of Responsiveness

2.25.3.1 During Technical Bid evaluation, the tendering authority will verify whether each bid:

- a) meets the eligibility criteria of Clause 3.1 and 3.3,
- b) Bid document is properly signed,
- c) includes all required documents and securities, and
- d) is substantially responsive to the bidding requirements.

2.25.3.2 Financial Bids will be reviewed only for those bidders who qualify technically.

2.25.3.3 A substantially responsive bid is one that meets all essential requirements of the bidding documents without material deviation. Bids that are not substantially responsive shall be rejected and cannot be made responsive by subsequent correction or withdrawal.

2.25.3.4 The Tendering authority may seek clarifications from bidders during technical evaluation. Clarifications must be submitted within the time specified. No change in price or substance of the bid will be permitted.

2.25.4. Evaluation and Comparison of Bids

2.25.4.1 Only the Financial Bids of bidders who satisfy Clause 3.1 ,3.2 and 3.3 and are found technically responsive will be evaluated.

2.25.4.2 Among the technically qualified bidders, the selection will be based on the Lowest Quoted Financial Bid (L1).

2.25.4.3 The bidder quoting the lowest (L1) price shall be considered for award of contract, subject to meeting all contractual requirements.

2.25.4.4 The Tendering Authority may seek clarifications, including rate breakdowns, but no change in quoted price will be allowed except for correction of arithmetical errors.

2.26 Statutory, Regulatory, and Technical Compliance

- (i) The successful bidder shall ensure full compliance with all applicable statutory provisions, rules, regulations, codes, standards, and safety requirements relevant to the procurement of materials and execution of works for boundary chain link fencing, including but not limited to labour laws, environmental norms, safety regulations, quality standards, and local authority approvals.
- (ii) The bidder shall also comply with all standards applicable to fencing works in solar power projects, including material quality, galvanization, structural stability, corrosion protection, workmanship, and site safety, as per approved drawings, specifications as per tender document.

2.27 COMMUNICATIONS

All communications including the submission of hard copy of offer should be addressed to:

Chief Executive Officer (CEO) Lucknow Solar Power Development Corporation Limited (LSPDCL), 3rd Floor, UPNEDA Building Vibhuti Khand, Gomti Nagar, Lucknow Phone: 0522-3119549 Email: lspdcl2015@gmail.com Website: www.lspdcl.co.in
--

2.28 Scope of Work

Lucknow Solar Power Development Corporation Limited (LSPDCL) invites proposals for Design, Engineering, Procurement & Supply, Construction, Testing, Commissioning and Completion of Chain-Link Boundary Fencing Works, including associated civil, structural and geotechnical works, at the 35 MW Kanpur Nagar Solar Park, located on Government Land at Village Katar, Tehsil Ghatampur, District Kanpur Nagar (Uttar Pradesh).

The successful bidder shall undertake a complete turnkey scope covering design & engineering of fencing structures, procurement & supply of all materials, testing at manufacturer's works, multi-stage inspections, packing & forwarding, transportation, receipt, unloading & storage at site, all associated civil works, services, statutory permits, installation and all incidentals, insurance at all stages, erection, testing and commissioning of the entire boundary fencing system including gates, and related civil works. The work shall also include **performance demonstration, structural**

stability assurance and completion of all related activities necessary to deliver a fully functional, durable and secure boundary protection system for the 35 MW Solar Park.

2.28.1 Project Site Location

Particular	Details
Village	Katar
Tehsil	Ghatampur
District	Kanpur Nagar, Uttar Pradesh
Installed Solar Capacity	35 MW (Park Area Approx. 165 Acres)
Fencing Length (Approx.)	7.5 km (or as finalized in survey)
Nearest Substation (Reference)	33/11 kV Ghatampur / Local DISCOM Infrastructure

2.28.2 Design & Engineering Scope

- (A)** The Contractor shall plan and design the complete structural and civil works required for execution of the Chain-Link Boundary Fencing System for the 35 MW Kanpur Nagar Solar Park. The design effort shall include, but not be limited to:
- (i) Overall fencing configuration and alignment planning
 - (ii) Space optimization, gate-location planning and access-route planning
 - (iii) Determination of post spacing, embedment depths and bracing requirements
 - (iv) Structural adequacy for wind loads, water-logging pressures and flood risk
 - (v) Civil foundations, RCC pedestals, retaining works and special foundations
 - (vi) Material selection (angles, flats, pipes, chain-link mesh, concertina, barbed wire, foundations, gate assemblies etc.)
 - (vii) Determination of optimal excavation, PCC, RCC works and soil-improvement measures
 - (viii) Integration of flood-mitigation civil responses along fencing alignment
 - (ix) Procurement planning for steel, concrete materials and fencing accessories.
- (B) The Contractor shall prepare and submit the following engineering documents:**
- (i) Detailed Design Basis Report (DBR) covering all structural, geotechnical and civil assumptions
 - (ii) PERT / CPM Chart (minimum 3 levels) covering the full execution schedule
 - (iii) Master Drawing List (MDL) covering all general arrangement drawings, structural drawings, foundation drawings, gate drawings, retaining wall drawings, and as-built documentation

B.1 Structural Design Requirements

- ▶ All structural design calculations including wind load, seismic load, flood load, and soil loading shall comply with relevant IS Codes.
- ▶ Designs must consider site environmental factors including atmospheric corrosion, soil salinity, rainfall data, site drainage, and long-term durability.
- ▶ All angle posts, struts, tubular posts, gate structures, bracings and associated steel works shall be hot-dip galvanized (HDG) as per LSPDCL specifications.
- ▶ Steel design drawings shall include reinforcement detailing, sections, embedment depths, cross-sections, construction notes and any special structural requirements.
- ▶ Soil investigation shall be carried out per IS 1892:1979. A minimum of one bore hole per 500 m of fencing alignment shall be sunk.

B.2 Standards, Testing & Approvals

- ▶ All designs & drawings shall be prepared based on **BIS / IS codes**, LSPDCL technical requirements, and good engineering practices.
- ▶ The mandatory list of applicable codes shall include, as a minimum: IS 875 (Parts 1–5), IS 800:2007, IS 456:2000, IS 1893 (Part 1):2016, IS 1892:1979, IS 6403:1981 (foundations/earth pressure), IS

2721:2003, IS 278:2009, IS 4759:1996, IS 4826:2023, IS 2629:1985, IS 2633, IS 6745, IS 1786:2008, IS 2062:2011, IS 808:1989, IS 3043:2018, IS 10262:2019, and CPWD Specifications 2019 (Vol. I & II).

- ▶ LSPDCL may recommend modifications to enhance durability or safety without compromising workmanship.
- ▶ Contractor shall submit material samples to Government / NABL-accredited laboratories whenever required by the Engineer-in-Charge.
- ▶ **Detailed drawings shall be submitted in AutoCAD / STAAD formats including:**
 - All reinforcement layouts
 - Foundation details
 - Sections and elevations
 - Retaining wall drawings
 - Gate and fencing structural drawings
- ▶ Designs must comply with BIS, IS Codes, MoRTH and local authority guidelines.
- ▶ LSPDCL reserves the right to modify specifications based on site conditions. Contractor must comply without additional cost or time, subject to prior approval.
- ▶ Contractor shall submit all design documents, GTPs and test certificates to LSPDCL for review and approval before any work begins.

B.3 Documentation to Be Submitted for Approval

The Contractor shall submit, as applicable to fencing and civil works:

- Detailed technical specifications (GTP) of all materials (steel, mesh, concrete etc.)
- General arrangement drawings
- Complete civil and structural design calculations
- Fencing layout plans, gate drawings, Boundary wall drawings
- Quality assurance plans (Manufacturing QAP, Field QAP, SOPs)
- Site EHS plan, fire & emergency plan
- As-built drawings & deviation list
- Master Drawing List (MDL) with all drawings bearing drawing number, revision number, date, draughtsman and engineer approval signatures. GFC drawings to be fully dimensioned in metric (SI) units — not for scale / reference drawings are NOT acceptable for execution.
- Site Fencing Layout Plan (1:2000 scale) —showing total alignment, corner/angle points with UTM coordinates, gate locations (numbered), strut-post positions, earthing electrode positions, access road intersections, and benchmark references.

C Supply and Fixing of Chain-Link Mesh:

The bidder shall provide a complete break-up of taxes and duties along with the price bid, as required in the tender forms. All responsibilities related to statutory compliances remain with the Contractor, and no additional claims shall be entertained on this account.

Provision and installation of galvanized iron (GI) chain-link mesh with a 50 mm × 50 mm aperture, manufactured from 4.0 mm diameter galvanized wire, ensuring high durability, corrosion resistance, and perimeter security. The GI chain-link mesh shall strictly conform to the requirements of IS 2721:2003 – Galvanized Steel Chain Link Fence Fabric Specification, covering material quality, mesh size, wire diameter, tensile strength, galvanization coating, workmanship, and mandatory tests including mesh size verification, tensile test, wrapping test, twist test, bend test, and galvanizing uniformity test.

D. Earthwork & Foundation Works

Earthwork in excavation for foundations in ordinary soil to a minimum depth of 750 mm, including dressing, ramming of bottoms, lift up to 1.5 m, lead up to 30 m, and disposal of surplus soil as directed; followed by providing and laying PCC 1:4:8 in foundation and CC 1:2:4 up to plinth level. Work includes supply and fixing of angle-iron posts/struts, GI chain-link mesh (50×50 mm, 4 mm dia), concertina coil (600 mm dia, punched-tape type) with reinforced barbed tape/RBT wire, GI barbed wires, fasteners, and structural steel components, all completed as per drawing, specification, and direction of the Engineer-in-Charge.

E. Installation of GI Poles:

Provision and installation of hot-dip galvanized (HDG) angle posts of size 50 × 50 × 6 mm conforming to IS 808:1989 along the boundary, placed at 2.5-metre intervals. All angle posts shall be installed vertically aligned and embedded in M20 / M25 -grade concrete foundations (IS 456:2000, design mix 1:1.5:3 or design mix as approved, W/C ≤ 0.50, min cement 300 kg/m³) to ensure long-term stability and resistance to environmental factors. GI pipes shall be used for all gate frames and gate-support posts, designed to withstand operational stresses and corrosion effects.

In addition to the regular angle-post spacing, support posts shall be provided at the following mandatory locations to ensure structural integrity of the fence:

- ▶ At all corner points of the boundary to counteract directional tension.
- ▶ At all gate locations, including both sides of each gate opening. Strut posts shall be provided at every 6th main post (i.e., at ≤ 15 m spacing) in straight runs and at all corners, angle changes, and gate locations. Structural adequacy of the 15 m panel shall be demonstrated by calculation in the DBR, considering V_b as per IS 875 Part 3:2015 for Kanpur.
- ▶ At angle changes or turning points along the boundary to reinforce load transfer.

F. Concertina Coil and Barbed Wire Installation:

Deployment of concertina coils and barbed wire atop the chain-link fencing to enhance security and prevent unauthorized access.

G. Fabrication and Erection of Gates:

Manufacturing and installation of two heavy-duty gates, constructed to withstand frequent use and adverse weather conditions. Gates must be equipped with secure locking mechanisms and robust hinges, facilitating controlled access to the solar park. Each main gate shall be a double-leaf swing type, minimum 6 m clear opening width, 3.5 m height, fabricated from Circular Hollow Sections (CHS) frames as specified. Each leaf to carry a 3-point locking arrangement with heavy-duty padlock provision (minimum BIS-marked 50 mm shackle lock). Hinges: minimum 4 Nos per leaf, forged steel, capable of carrying 1.5× leaf weight. Gate frame to be designed for minimum 0.5 kN/m² wind pressure. Dimensions to be finalized in GFC drawings.

H. Site Preparation:

Clearing, levelling, and preparation of the installation site, ensuring all obstructions are removed and the area is ready for construction activities. This includes marking the fence alignment, excavating foundation pits, and ensuring all materials are delivered and stored in accordance with safety standards.

All work shall be executed in accordance with the approved drawings, technical specifications, and relevant Indian Standards, ensuring compliance with statutory regulations and best practices.

2.29 Estimated Timeline of Project Completion

- ▶ The Contractor shall complete the entire Chain-Link Boundary Fencing Work for the 35 MW Kanpur Nagar Solar Park within a maximum period of One Hundred Eighty (180) Days from the date of issuance of the Work Order (WO) / Letter of Award (LOA).
- ▶ Upon completion of all works, testing, inspection, and acceptance by LSPDCL, the site shall be handed over to the LSPDCL.
- ▶ No Operation & Maintenance (O&M) services shall be required from the Contractor after the formal handover of the completed fencing system. However, the Contractor shall be fully responsible for rectification of defects arising in the fencing work, materials, structural components, civil foundations, gates, galvanized steel elements, accessories or workmanship etc., for a period of One (1) Year from the date of commissioning / handing over of the fencing works.
- ▶ This shall constitute the Defect Liability Period (DLP).
- ▶ The Contractor shall submit a detailed Programme of Supply and Work Execution Schedule, including procurement, delivery, fabrication, erection, inspection and approval timelines. Strict adherence to the approved schedule shall be an essential condition of the Contract.
- ▶ The Contractor must ensure that all milestones are achieved within the stipulated time, and the entire scope is completed within 180 days, as per the approved schedule and contract requirements.

The work must be completed as per the Timeline mentioned below:

Milestone / Phase	Timeline (Days)	Activities & Deliverables	LSPDCL Review / Feedback Timeline
Design, Surveys & Initial Approvals	Day 0 – Day 30	<ul style="list-style-type: none"> ▶ Mobilization & site establishment ▶ Topographic survey of full fencing alignment ▶ Soil investigation (Govt./NABL lab) ▶ Preliminary engineering calculations ▶ Preparation of Design Basis Report (DBR) ▶ Preparation of GFC Drawings (Foundations, Posts, Mesh, Gates, Retaining Wall if any) ▶ Submission of Master Drawing List (MDL) ▶ Submission of PERT / CPM (Level-3) 	<p>LSPDCL Response Window:</p> <ul style="list-style-type: none"> ▶ Initial review & comments within 10 days of submission ▶ Contractor to revise drawings within 5 days of receipt of comments ▶ LSPDCL to approve revised drawings within 5 days <p>Note: Incomplete or incorrect submissions shall not be considered for review. The responsibility for completing and obtaining all necessary approvals of the drawings within the stipulated period of 30 days shall rest solely with the contractor.</p>

Procurement Planning, Material Fabrication & HDG, Material Delivery	Day 31 – Day 60	<ul style="list-style-type: none"> ▶ Finalization of procurement schedules ▶ Release of purchase orders ▶ Fabrication of angle posts, struts, gates, stays ▶ HDG (Hot-Dip Galvanizing) of steel components as per IS 4759:1996 and IS 2629:1985 ▶ Submission of GTPs & product certifications ▶ Pre-dispatch inspection preparation ▶ Transportation, unloading, secure storage at Site. 	<p>LSPDCL Response Window:</p> <ul style="list-style-type: none"> ▶ Review of GTPs & QA documents: 7 days ▶ Comments to be addressed: 3 days ▶ Final approval: 3 days
Foundations, Civil Works	Day 61 – Day 130	<ul style="list-style-type: none"> ▶ Excavation & PCC 1:4:8 ▶ RCC foundations & concreting - M20 /M25 (IS 456:2000, design mix 1:1.5:3, W/C ≤ 0.50) ▶ Installation of angle posts & struts ▶ Gate pillar foundations & fabrication ▶ Retaining wall works (if identified in design) ▶ HDG coating verification tests ▶ Fixing of chain-link mesh (50x50 mm) ▶ Installation of concertina coils / barbed wire ▶ Periodic QA/QC & MB recording 	<p>LSPDCL Review Window:</p> <ul style="list-style-type: none"> ▶ Construction quality inspections: 48–72 hours from request ▶ Non-conformance reply (if any): Within 3 days ▶ Approval for continuation: Same 3–day window
Completion, Testing & Commissioning	Day 131 – Day 160	<ul style="list-style-type: none"> ▶ Completion of all fencing sections ▶ Gate installation, locking, support stays ▶ Tensioning & alignment rectifications ▶ Concertina/Barbed security finishing ▶ Final concrete curing & painting/touch-up ▶ Electrical earthing bonding (if applicable as per IS 3043:2018, earth resistance ≤ 10 Ω at ≤ 250 m intervals) ▶ Submission of final QA/QC dossier ▶ Joint inspection request 	<p>LSPDCL Review Window:</p> <ul style="list-style-type: none"> ▶ Joint inspection scheduled within 5 days of request ▶ Punch list issuance: Within 3 days ▶ Contractor punch-list rectification: Up to 7 days ▶ Final acceptance recommendation: Within 3 days
As-Built Documentation & Final Handover	Day 161 – Day 180	<ul style="list-style-type: none"> ▶ Preparation of As-Built Drawings (AutoCAD) 	<p>LSPDCL Review Window:</p>

		<ul style="list-style-type: none"> ▶ Submission of deviation log from GFC ▶ Submission of MB (Measurement Book ▶ Submission of test certificates (HDG, concrete, steel) ▶ Site cleaning & demobilization ▶ Request for Taking-Over Certificate 	<ul style="list-style-type: none"> ▶ Final document review: 10 days ▶ Final corrections (if any): Contractor 5 days ▶ Issuance of Taking-Over Certificate: Within 5 days of compliance of satisfactory completion of 1 year tenure.
--	--	---	--

Note: The issue of LoA/Work Order shall be considered as the Zero Date. This schedule shall be prepared so as to ensure the commissioning of complete plant within 180 days from issue of LoA.

2.29 Contract Price

The bidder shall quote prices strictly as per the Schedule of Items of Work provided in the tender documents. The Contract Price shall be firm, fixed and binding, and shall not be subject to any variation whatsoever during the entire contractual completion period of the project.

The quoted price shall be **exclusive of GST** but inclusive of all statutory charges, transportation costs, inspection charges, insurance, handling, loading/unloading, labour charges, overheads, and all incidental expenses required for the satisfactory completion of the Chain-Link Boundary Fencing Work for 35 MW Kanpur Nagar Solar Park.

The quoted price must also include all costs associated with:

- ▶ Design and detailed engineering
- ▶ Manufacturing, fabrication and hot-dip galvanizing
- ▶ Factory-level inspections and testing
- ▶ Packing, forwarding and transportation to site
- ▶ Transit insurance and storage at site
- ▶ All clearances, permits, commercial tax formalities, road permits, royalty payments and any other statutory compliance required for transport or execution
- ▶ Complete installation, erection, civil works and commissioning of the fencing system

2.30 Payment Terms and Conditions

- (i) Payment shall be released strictly against milestone completion as per the Payment Matrix below:
- (ii) The Contractor shall submit bills in tri-copy (Original + Duplicate + Contractor Copy) along with Measurement Book (MB) extracts, QA/QC test certificates, approved drawings, delivery challans, GTPs, PERT/CPM updates, and all relevant documents required for verification.
- (iii) Running Account (RA) bills shall be processed only after certification by the LSPDCL / LSPDCL's Project Officer / Authorised Representative. Payments will be made through PFMS/NEFT within the standard departmental timeline after receipt of a complete and correct invoice.
- (iv) All statutory deductions such as GST-TDS, Income Tax TDS, Labour Cess, Royalty, etc. shall be made as applicable. No claim for idle charges or interest on delayed payment shall be entertained unless provided in the contract.
- (v) Final payment shall be released only after submission of As-Built drawings, final QA/QC dossier, deviation statement, and issuance of the Taking Over Certificate (TOC).

S. No.	Milestone	Required Documents	Payment %
1	Supply of Complete Chain-Link Fencing Materials (As per approved BoM) at Site	e-Waybill with Delivery Challan, Weight Bridge Copy, & Annexure – 1	40%
2	Completion of Installation, Testing & Commissioning of Chain-Link Fencing	Work Completion Certificate duly signed by the LSPDCL's Site-In-charge / LSPDCL Representative/ PMC	40%
3	Submission of As-Build Drawings, Test Reports & Documents and Final Handover	Submission of All Drawing, Quality Check Test Reports & Documents as per LSPDCL	10%
4	Completion of Defect Liability Period (DLP) – 1 years from issuance of Handover Certificate	Satisfactory project completion certificate, issued by LSPDCL.	10%

SECTION 3: ELIGIBILITY AND QUALIFICATION CRITERIA

SECTION 3: ELIGIBILITY & QUALIFICATION CRITERIA

3.1 Eligible Bidders:

All the bidders must fulfill the requirements below to participate in the bid process:

- (i) Any firm duly incorporated under the Companies Act, 2013, including a Private Limited Company, Public Limited Company, Proprietorship Firm, or Corporation registered in India, shall be eligible to submit a Bid.
- (ii) Authorized dealers, sub-contractors, LLPs, NGOs, Charitable Trusts, and Societies are NOT permitted to participate in this tender.
- (iii) In the case of registered companies, the Bidder shall submit duly certified copies of the Certificate of Incorporation, Memorandum of Association (MoA), and Articles of Association (AoA) along with the Bid.
- (iv) The Bidder shall not be debarred, blacklisted, or declared ineligible for corrupt or fraudulent practices by the Central Government, any State Government, Public Sector Undertaking, Autonomous Body, or any other Government authority.
- (v) The Bidder shall furnish a Declaration of Non-Debarment / Non-Blacklisting on a non-judicial stamp paper of appropriate value, confirming that the bidding entity is neither blacklisted nor debarred by any competent authority.

3.2 Financial Qualification:

- 3.2.1 The Bidder must have a **Minimum Average Annual Turnover (MAAT)** of not less than INR 78 Lakh during the preceding three (3) financial years ending 31st March 2025 of respective Financial Year (FY) i.e., FY 2022-23 FY 2023-24 & FY 2024-25. The Bidder must submit the CA-certified MAAT certificate along with a valid UDIN, together with the audited financial statements for the corresponding three financial years as part of the Technical Bid.
- 3.2.2 **Net Worth** Should be Positive, Net Worth” of the Bidder shall be calculated as per Company Act 2013.
The CA Certificate should have the Unique Document Identification Number (UDIN) as per Gazette Notification No. 1 – CA (7)/192/2019 dated 02.08.2019.
- 3.2.3 The Bidder should have valid GSTIN registration certificate. A copy of registration certification should be enclosed.

3.3 Technical Qualification of the Bidder:

- 3.3.1 The Bidder must have successfully executed similar works for any Central or State Government organization (including local bodies or autonomous institutions under them) or any registered Company in India during the last five financial years (FY 2020-21 to 2024-25).

(If the experience certificate is issued by a Company, the Bidder shall also submit the Company’s Certificate of Incorporation; and if the experience pertains to supply, installation, and commissioning for a private company, the Bidder must additionally provide supporting evidence such as GPS-tagged installation proof, completion photographs, or a valid work completion certificate.)

3.3.2 Also, the Bidder must meet at least one of the following experience criteria, ending on the last day of the month preceding the month in which applications are invited:

(a) one similar completed work costing not less than 80% of the estimated cost of work,

or

(b) two similar completed works each costing not less than 50% of the estimated cost,

or

(c) three similar completed works each costing not less than 40% of the estimated cost.

(For the purpose of eligibility, “similar work” shall mean work related to the designing and construction of chain-link fencing, fencing walls, or any civil works pertaining to infrastructure, utility, or renewable energy projects.)

Note: Only fully completed works shall be considered for experience evaluation, ongoing or partially completed projects will NOT be accepted.

3.3.2.1 The Bidder must submit completion certificates issued by the client clearly stating:

- Contract value
- Nature/scope of work
- Actual completion date

3.3.2.2 The performance certificate must not be older than 6 months from the date of publication of the tender.

3.3.2.3 The Bidder must submit the LOA / LOI / Work Order / Purchase Order together with the corresponding completion certificate. Experience will not be considered for qualification if a completion certificate is not provided for the submitted LOA / LOI / Work Order / Purchase Order.

3.3.2.4 If the Bidder submits work experience issued by a Private Company, the Bidder must also provide the Company's Certificate of Incorporation as proof of its legal status.

3.3.2.5 For supply, installation, and commissioning works executed for a private company, the Bidder must additionally submit supporting documentary evidence, such as:

- (i) GPS tagged installation proof (Latitude & Longitude of installed location),
- (ii) Completion photographs, and/or
- (iii) A detailed work completion certificate clearly indicating the location and successful completion of the work.

3.3.2.6 Details of the Bidder's previously completed contracts shall be provided in **Form-9** of the Bid Submission Forms, along with complete client contact information for verification purposes.

SECTION 4: GENERAL CONDITIONS OF CONTRACT (GCC)

SECTION 4: GENERAL CONDITIONS OF CONTRACT (GCC)

The provisions, instructions, and information contained within the Bid Documents are designed to guide prospective bidders in preparing their submissions in full compliance with the requirements of Lucknow Solar Power Development Corporation Ltd. (LSPDCL). Bidders are encouraged to seek clarifications from LSPDCL, where necessary, prior to submitting their bids. In the absence of any such requests, it shall be conclusively presumed that the bidder has carefully reviewed, understood, and unconditionally accepted all terms, conditions, and obligations set forth in the Bid Documents.

All expenses incurred by the bidder in connection with the preparation and submission of the bid including, but not limited to, travel and incidental costs during the bidding process up to the award of contract shall be entirely borne by the bidder. LSPDCL shall not, under any circumstances, be held responsible or liable for such expenses, irrespective of the conduct or outcome of the bidding process.

4.1 Bid Document

The Bid Document shall consist of all documents, forms, schedules, and annexures included within this bid document issued by Lucknow Solar Power Development Corporation Ltd. (LSPDCL). In addition to this, any addendum, corrigendum, amendment, revision, clarification, or instruction issued by LSPDCL to the bidders up to the due date of opening of the proposals shall also be deemed to form an integral and binding part of the Bid Document.

4.2 Inspection of Materials, Workmanship, and Testing

Lucknow Solar Power Development Corporation Ltd. (LSPDCL) reserves the right to inspect the manufacturer's facilities, fabrication units, or any place of work to assess the capability, infrastructure availability, quality control systems, and workmanship relevant to the supply and installation of the Chain-Link Fencing boundary.

LSPDCL or its authorized representatives shall have full access to inspect and examine the work, materials, or any part thereof at any stage, including verification of compliance with the technical specifications, drawings, quality standards.

The successful bidder shall inform LSPDCL at least 15 days in advance prior to the scheduled dispatch of materials for quality inspection and verification.

4.3 Dispatch Instructions

All items, components, and materials supplied under this bid document shall be subject to Pre-Dispatch Inspection (PDI) by LSPDCL or its authorized agencies at the manufacturing facility or authorized storage location prior to dispatch.

- ▶ The vendor must ensure availability of adequate in-house testing facilities as per applicable IS/BIS standards relevant to fencing materials (e.g., mesh specifications, wire gauge, galvanization quality, posts, fasteners).
- ▶ If in-house testing facilities are not available, the bidder shall arrange testing of selected samples at a NABL-accredited laboratory, in the presence of LSPDCL or its authorized representative.
- ▶ All testing costs, laboratory fees, and associated expenses shall be borne entirely by the bidder.
- ▶ Dispatch of materials shall be permitted only after receipt of written "Dispatch Clearance" from LSPDCL based on satisfactory test results.
- ▶ No consignment shall be dispatched without a formal dispatch clearance.

- ▶ No PDI shall be conducted at sites other than the bidder's manufacturing unit or its authorized premises.
- ▶ Failure to comply with PDI requirements may lead to cancellation of the Work Order and forfeiture of Performance Security.
- ▶ The contractor shall ensure that Supply and Installation is completed within the timeline prescribed in the Work Order, including all PDI activities. PDI must be arranged within 15 days of receiving communication from LSPDCL.
- ▶ All expenses related to inspection and associated activities shall be borne solely by the bidder.

4.4 Project Management Consultant (PMC) / Third-Party Inspection Agency (TPI)

LSPDCL, at its sole discretion, may appoint a Project Management Consultant (PMC) or a Third-Party Inspection Agency (TPI) to conduct inspections related to:

- Procurement and material quality
- Fabrication and finishing of fencing materials
- Supply, installation, and alignment
- Foundation works, structural integrity, and installation quality
- Verification before acceptance and completion

The contractor shall provide unrestricted access, documentation, and support to PMC/TPI, and facilitate all inspections by any authorized agency.

4.5 Guarantee & Warranty

The fencing system, including all materials supplied and installed by the contractor, shall be warranted for a minimum period of 1 (One) year from the date of successful completion of installation/handover of the project.

The Guarantee/Warranty shall cover:

- Quality of material and workmanship
- Structural stability of posts and foundations
- Mesh integrity, rust prevention, and galvanization quality
- Alignment, fixing components, and overall installation workmanship
- Any defects observed during the warranty period shall be rectified by the contractor at their own cost, promptly and satisfactorily.

The contractor must issue Warranty Certificates for all components in the name of Lucknow Solar Power Development Corporation Ltd. (LSPDCL), Lucknow

4.6 Risk & Cost

If the contractor fails to complete the assigned work within the stipulated schedule, LSPDCL will have the right to:

- ▶ Cancel the Work Order
- ▶ Engage an alternate contractor to complete the remaining work
- ▶ Recover all additional expenses and consequential losses from the defaulting contractor

The failed contractor shall be fully liable for all costs incurred by LSPDCL in completing the remaining work at the contractor's risk and cost.

4.7 Arbitration

- (i) All disputes arising out of or in connection with this bid document or the subsequent Contract shall be governed by the Arbitration and Conciliation Act, 1996, and its amendments.
- (ii) The Seat of Arbitration shall be Lucknow, Uttar Pradesh.
- (iii) This BID DOCUMENT and all related agreements shall be governed by the laws of India.
- (iv) Legal proceedings, if any, shall fall under the exclusive jurisdiction of the competent courts in Lucknow, U.P.

4.8 Insurance

The Supplier/Contractor shall arrange Transit Insurance and On-site Insurance for all materials supplied under this Bid document until installation is completed and accepted. The contractor shall also be responsible for providing the following coverage, but not limited to:

- Insurance covering theft, loss, damage, or replacement of fencing materials until completion.
- Insurance of workmen and labor involved in the execution of the project.
- Compliance with statutory provisions including:
 - ▶ The Workmen's Compensation Act, 1923
 - ▶ The Fatal Accidents Act, 1855
- All other applicable labour and safety laws
- All insurance costs shall be borne entirely by the contractor/ selected bidder, in any case LSPDCL shall not be responsible for any mishappening or any coverage of selected contractor's work.

4.9 Assignment / Sub-Letting

- (i) The Vendor/Contractor shall not assign, transfer, subcontract, or sublet any part of the Contract or obligations related to manufacturing, fabrication, testing, packing, forwarding, transportation, transit insurance, supply, installation, or any other scope of work whether in whole or in part to any third party, without any prior written approval from LSPDCL.
- (ii) In the event the contractor violates this condition, Lucknow Solar Power Development Corporation Ltd. (LSPDCL) reserves the right to terminate the Contract immediately and procure the remaining work from alternate sources at the risk and cost of the defaulting Contractor. The Contractor shall be solely liable for any loss, damage, or additional expenditure incurred by LSPDCL due to such replacement of contracted work.

4.10 Progress Report

- ▶ The Contractor shall submit a fortnightly progress report (every 15 days) to the General Manager, LSPDCL (Email: lspdcl2015@gmail.com), detailing the status of procurement, fabrication, material readiness, dispatch schedules, and installation progress.
- ▶ LSPDCL reserves the right to depute its representatives to inspect and verify the progress of work at the project site, manufacturing facility, or any other relevant location at any time.

4.11 Project Inspection

4.11.1 General Inspection Authority

- (i) LSPDCL shall monitor project progress and may conduct quality inspections at any stage during supply, installation, or after completion either through its officers or through authorized agency/experts designated by LSPDCL.
- (ii) All expenses related to such inspections shall be borne solely by the Contractor.

4.11.2 Sample Inspections

LSPDCL reserves the right to conduct sample checks of materials supplied and installed by the Contractor to ensure compliance with approved specifications and standards.

4.12 Technical & Capability Verification

LSPDCL may depute technical personnel or may engage third party individual experts to assess and verify and monitor the ground installations, not limited to the following points:

- ▶ Inspect and verify materials and workmanship
- ▶ Conduct third-party verification
- ▶ Monitor installation quality
- ▶ Visit the manufacturing facilities to evaluate material quality and production capability
- ▶ Assess the technical competence of the Contractor

The Contractor shall provide all necessary assistance, access, and cooperation.

4.13 Quantity Variation

- (i) The quantities indicated in this Tender Document are tentative and subject to adjustment based on actual execution and joint measurement at site. The Contractor shall be paid strictly on the basis of the actual executed length of boundary fencing.
- (ii) In the event that the executed length is less than the tentative length, the payment shall be restricted to the actual measured length only, and the Contractor shall have no claim whatsoever for the reduced quantity or for loss of profit on the unexecuted portion.
- (iii) Where the executed length exceeds the tentative length by up to thirty percent (30%), no additional payment shall be made for such excess, and the Contractor shall be deemed to have included this variation within the quoted Contract Price.
- (iv) Only when the executed length exceeds the +30% permissible limit, the incremental quantity beyond the initial 30% shall be paid at the quoted base rate accepted in the Price Bid, without any enhancement, escalation, or claim for overheads or consequential impacts.

This clause shall constitute a binding contractual adjustment mechanism, and no deviation, claim, or representation shall be entertained contrary to the terms stated herein.

4.14 Compliance with Regulations

The selected Contractor/ Bidder shall comply with all applicable rules and regulations, notified pertaining to the Scope of Work of this bid document, during the execution of the work. The details of major laws/regulations are indicated below:

- (i) Central and State laws
- (ii) Municipal Bylaws
- (iii) Safety regulations
- (iv) Labour laws
- (v) Indian Standards (IS/BIS)
- (vi) Environmental and industrial regulations

The Contractor shall be responsible for obtaining all necessary permits, approvals, and licenses required for completion of the project at their own cost. The Contractor shall indemnify and keep LSPDCL harmless against any penalties, liabilities, or consequences arising from non-compliance with statutory requirements.

4.15 Income Tax

Without prejudice against the Contractor's legal obligations, any tax deduction at source (TDS) required under applicable laws shall be deducted by LSPDCL from payments due to the Contractor

and deposited with the Income Tax authorities. LSPDCL will issue a TDS certificate to the Contractor for such deductions, in accordance with statutory provisions.

4.16 Corrupt or Fraudulent Practices

LSPDCL requires all Bidders/Contractors to strictly comply with the laws of India relating to fraud, corruption, bribery, and unethical practices, including but not limited to the Prevention of Corruption Act, 1988 and its subsequent amendments.

If any document submitted by the Bidder is found to be fraudulent, fabricated, misleading, or incorrect, LSPDCL reserves the absolute right to:

- ▶ Reject the Bid
- ▶ Cancel the Work Order
- ▶ Blacklist the Bidder from future tenders
- ▶ Initiate any other action as deemed appropriate under law

4.17 Indemnity

The Selected Vendor shall submit an Indemnity Bond along with the Contract and agrees to defend, indemnify, and hold harmless LSPDCL, its Directors, Officers, Employees, Consultants, Agents, and Affiliates from and against all claims, liabilities, damages, losses, suits, judgments, penalties, or expenses arising from:

- ▶ Bodily injury or death of third parties
- ▶ Damage to property
- ▶ Acts of negligence, misconduct, or breach of duty by the Vendor or its staff, subcontractors, or agents

This indemnity shall survive the completion or termination of the Contract.

4.18 Completeness of the Bid

All components, fittings, accessories, fixtures, fasteners, hardware, safety devices, and any other items required for satisfactory completion of the Chain–Link Fencing work shall be deemed to be included in the Bid, whether explicitly mentioned in the Bill of Material (BoM) or not. No additional claims shall be entertained on account of missing items necessary for complete functionality.

4.19 Force Majeure Conditions

If either party is unable to perform obligations under the Contract due to a Force Majeure event, such obligations shall remain suspended for the duration of the Force Majeure condition.

Force Majeure shall include:

- (i)** War, hostilities, or acts of public enemy
- (ii)** Riots or civil commotion
- (iii)** Natural calamities such as earthquakes, floods, lightning, landslides
- (iv)** Fires not caused by the Contractor's negligence
- (v)** Epidemics or pandemics
- (vi)** Strikes and lockouts (supported by certificate from Labour Commissioner)
- (vii)** Any other circumstances beyond the control of the affected party, accepted as Force Majeure by the LSPDCL.

Conditions:

- ▶ Notice of the Force Majeure event must be given within 15 days of its occurrence.
- ▶ Neither party shall claim compensation for delays caused by Force Majeure.
- ▶ Work shall resume as soon as practicable after the event ceases.

If the work remains suspended due to Force Majeure for more than 45 days, LSPDCL reserves the right to:

- (i) Cancel the Contract fully or partially
- (ii) Take any action deemed appropriate

The Contractor shall not be liable for claiming damages for such termination.

4.20. Confidential Information and Proprietary Data

4.20.1 Proprietary Data

All documents, drawings, technical data, and information supplied by LSPDCL or submitted by the Bidder shall remain the property of LSPDCL. Bidders shall treat all information provided in the bid document and related documents as strictly confidential and shall use it solely for preparation and submission of their Bid.

4.20.2 Confidentiality Obligations of LSPDCL

LSPDCL shall treat all information submitted by Bidders as confidential and will not disclose such information except under the following circumstances:

- (i) Where disclosure is contemplated under the bid
- (ii) Where disclosure is required for evaluation by officials or advisors
- (iii) Publication for project promotion, including names of participating Bidders and quoted rates
- (iv) When required by statutory authority under law
- (v) For asserting any right or defending any legal proceedings
- (vi) In connection with any legal process or compliance requirement

4.21 Rights of LSPDCL

(i) LSPDCL, at its sole discretion and without any liability, reserves the right to:

- ▶ Suspend, amend, or modify the Bid Process or its timelines
- ▶ Seek clarifications or additional information from any Bidder
- ▶ Retain documents submitted by Bidders
- ▶ Verify, accept, or reject any information submitted
- ▶ Reject a Bid if:
 - Material misrepresentation or false information is found
 - Supplementary information sought is not provided in time
 - Bid validity requirements are not met
- ▶ Accept or reject any or all Bids without assigning any reason

(iii) **If misrepresentation is discovered:**

- Before LoA: Bidder shall be disqualified
- After LoA: LSPDCL may cancel LoA or terminate the Contract

In such cases:

- Bid Security as Performance Guarantee shall be forfeited
- LSPDCL may recover any losses as genuine pre-estimated damages

4.22 Governing Law

The Bid Process, BID, and all related documents shall be governed by and construed in accordance with the laws of India.

4.23 Jurisdiction of the Court

All disputes relating to this BID DOCUMENT shall be subject to the exclusive jurisdiction of courts in Lucknow, Uttar Pradesh.

SECTION 5 : SPECIAL CONDITIONS OF CONTRACT (SCC)

SECTION 5 : SPECIAL CONDITIONS OF CONTRACT (SCC)

The following Special Conditions of Contract (SCC) shall supplement the General Conditions of Contract (GCC). Wherever there is a conflict, the provisions herein shall prevail over those in the GCC. The corresponding Clause number(s) of the GCC is/ are indicated in parentheses.

5.1 LABOUR

The Contractor shall, unless otherwise provided in the Contract, make his own arrangements for the engagement of all staff and labour, local or other, and for their payment of housing, feeding and transport. The Contractor shall, if required by the Engineer, deliver to the Engineer a return in detail, in such form and at such intervals as the Engineer may prescribe, showing the staff and the numbers of the several classes of labour from time to time employed by the Contractor on the site and such other information as the Engineer may require.

5.2 COMPLIANCE WITH LABOUR REGULATIONS

During continuance of the contract, the Contractor and his sub-contractor shall abide at all times by all existing labour enactments and rules made thereunder, regulations, notification and bye laws of the State or central Government or local authority and any other labour law (including rules), regulations, bye laws that may be passed or notifications that may be issued under any labour law in future either by the State or the Central Government or the local authority.

The Contractor shall keep the LSPDCL indemnified in case any action is taken against the LSPDCL by the competent authority on account of contravention of any of the provisions of any Act or rules made thereunder, regulations or notifications including amendments. If the LSPDCL is caused to pay or reimburse, such amounts as may be necessary to cause or observe, or for observance of the provisions stipulated in the notifications/bye laws/Acts/Rules/regulations including amendments, if any, on the part of the Contractor, the Engineer/ LSPDCL shall have the right to deduct any money due to the Contractor including his amount of performance security. The LSPDCL /Engineer shall also have the right to recover from the Contractor any sum required or estimated to be required for making good the loss or damage suffered by the LSPDCL. The employees of the Contractor and the Sub-Contractor in no case shall be treated as the employees of the LSPDCL at any point to time.

Salient features of some of the major labour and other laws that are applicable to the construction work are given below:

- a) **Employees' Compensation Act, 1923 (formerly the Workmen's Compensation Act, 1923) :-**
Employers are legally required to provide compensation to employees who sustain personal injury, disability, or death caused by accidents arising out of and in the course of employment. Recent amendments have updated the wage ceiling for compensation calculations, with the Central Government revising the notional monthly wage from ₹8,000 to ₹15,000 for determining statutory compensation. The Act prescribes structured compensation formulas for death, permanent total
- b) disablement, and other injuries, ensuring enhanced financial protection for employees and their dependents.

c) Employees' Provident Fund & Miscellaneous Provisions Act, 1952 (As Amended upto 2026):

Under the Employees' Provident Funds and Miscellaneous Provisions Act, 1952, as supplemented by the latest EPFO reforms and Budget 2026 amendments, both the employer and employees are required to make statutory monthly contributions to the Provident Fund. Employer contributions now fall within an integrated annual ceiling of ₹7.5 lakh across PF, NPS, and superannuation funds, thereby aligning the EPF framework with the revised tax provisions under the Income-tax Act, 2025:

- Employees are entitled to pension benefits through the Employees
- Deposit linked insurance on the death in harness of the worker.
- Payment of P.F. accumulation on retirement/death etc.

d) Occupational Safety, Health and Working Conditions Code, 2020 (OSH Code) :

(i) Contractor shall ensure full compliance with all statutory provisions relating to the engagement, welfare, and working conditions of contract labour. Under the OSH Code, establishments and contractors employing contract labour are required to obtain compulsory registration and licensing from the designated authorities, consistent with the restructured framework governing workplace safety and labour administration. In the event the Contractor fails to provide any mandated welfare facilities or statutory amenities to contract labour, the Principal Employer shall be responsible for providing such facilities and may recover the associated costs from the Contractor as permitted under law. The compliance obligations apply to any establishment or contractor engaged by the Principal Employer where the number of contract labour engaged meets or exceeds the statutory threshold prescribed under the OSH Code.

(ii) Establishments engaging inter-state migrant workers are required to ensure their welfare and regulate their conditions of employment. The Code mandates that employers provide essential facilities such as suitable accommodation, medical assistance, and journey allowances, including travel expenses from the worker's home state to the place of employment and back. These requirements apply to establishments where the engagement of inter-state migrant workers meets the statutory thresholds prescribed under the OSH Code.

(iii) Any establishment undertaking building or construction work with **10 or more workers** is required to register with the designated authority. Employers must continue to pay a construction cess, not exceeding **2% of the cost of construction**, as notified by the Government, with simplified self-assessment and payment mechanisms under the new Codes. Additionally, employers are obligated to ensure comprehensive safety and welfare measures at construction sites, including first-aid facilities, canteens, medical support, and suitable accommodation for workers, in accordance with the strengthened provisions under the OSH Code.

▶ The OSH Code consolidates 13 central laws (including the Factories Act) and provides a **single electronic registration** and **notice of commencement/cessation** framework before operations start; it also imposes **design-stage duties on architects/project engineers** to build safety into workplaces. It prescribes comprehensive **health, safety and welfare standards, reporting of accidents, dangerous occurrences, and notified diseases** to the designated authorities, and codifies **working-time limits (generally 8 hours/day, 48 hours/week)** with **annual leave with wages** and other

▶

▶ conditions. For factories, the Code applies (inter alia) where a manufacturing process is carried on with **≥ 20 workers with power** or **≥ 40 without power**.

- e) **Code on Wages, 2019** : The Contractor shall ensure full compliance with the provisions of the Code on Wages, 2019, which has subsumed the earlier Minimum Wages Act, 1948 and is legally effective from 21 November 2025. The Contractor shall pay to all workers engaged under this Contract wages that are not less than the minimum rates of wages as notified from time to time by the appropriate Government having jurisdiction over the place of work.
- f) **Payment of Wages Act, 1936 (as amended)**: Specifies the **wage period** and **time of payment** (before the 7th or 10th day after the wage period, depending on workforce size), permits payment **in cash, by cheque, or by credit to the employee's bank account** (2017 amendment), and exhaustively lists **permissible deductions** from wages; the Act's coverage was extended to employees earning up to **₹24,000/month** (Aug 28, 2017 notification).
- g) **Code on Wages, 2019 (replacing the Equal Remuneration Act, 1976)**: Ensures **equal remuneration for the same or similar work** without gender-based discrimination, **prohibits discrimination on the ground of sex in recruitment and in the conditions of employment** (covering actions such as transfer, training, and promotion), and **forbids lowering wages to achieve compliance**.
- h) **Industrial Relations Code, 2020 (replacing the Industrial Disputes Act, 1947)**: Consolidates India's industrial-relations law and **sets out the institutions and procedure to resolve industrial disputes** (works/grievance committees, **conciliation officers, Industrial Tribunals and National Industrial Tribunals, and voluntary arbitration**), **regulates when strikes and lockouts are lawful/illegal** with mandatory notice and restrictions during conciliation/adjudication, and **prescribes the conditions for lay-off, retrenchment and closure** including **prior government permission for factories/mines/plantations with ≥ 300 workers**, statutory retrenchment compensation, and a **Worker Re-skilling Fund** (15 days' wages per retrenched worker). (*In force nationwide from 21 Nov 2025.*)
- Industrial Relations Code, 2020** : Establishments employing 300 or more workers are required to prepare Standing Orders governing the conditions of employment on matters prescribed under the Code and have them certified by the designated Certifying Officer. The revised framework modernises the earlier law by raising the applicability threshold from 100 to 300 employees, introducing Model Standing Orders, and streamlining certification procedures to ensure clarity, transparency, and consistency in employment terms.
- i) **Child and Adolescent Labour (Prohibition and Regulation) Act, 1986 (as amended in 2016)** : The employment of children below 14 years of age is completely prohibited in all occupations and processes, without exception. The Act further prohibits adolescents aged 14 to 18 years from engaging in any hazardous occupations or processes. In line with these provisions, the employment of children in the Building and Construction industry is strictly banned.
- j) **Royalty Charges** : The Contractor shall be solely responsible for payment of all royalty charges to the competent authority in accordance with the prevailing statutory rules and notifications. In light of the Supreme Court's ruling affirming that *royalty is not a tax* and subsequent government policy revisions, royalty payments shall continue to be treated as a cost attributable to the Contractor. Unless expressly provided otherwise under the Contract's 'Change in Law' or price-adjustment provisions, all royalty charges shall be entirely borne by the Contractor and shall not be reimbursed by the Employer.

SECTION 6 : TECHNICAL SPECIFICATIONS

SECTION 6: TECHNICAL SPECIFICATIONS

The detailed technical specifications for the boundary chain-link fencing and gates are outlined below, for reference of the contractors/ bidders at the time of bidding. All the contractors/ bidders are advised to quote their financial proposal, considering these indicative technical specifications.

6.1 GENERAL

6.1.1 Scope of Work

Supply, fabrication, hot-dip galvanizing, transport, storage, installation, testing, commissioning and hand-over of chain-link fencing (including posts, struts, gates, mesh, concertina/barbed wire, earthing, retaining walls — if any) for the 35 MW Kanpur Nagar Solar Park (Village Katar, Tehsil Ghatampur, District Kanpur Nagar).

6.1.2 Definitions

All abbreviations used in this specification are defined as follows: DBR = Design Basis Report; GFC = Good for Construction Drawings; MDL = Master Drawing List; PERT = Programme Evaluation and Review Technique; CPM = Critical Path Method; LSPDCL = Lucknow Solar Power Development Corporation Limited; GTP = Galvanizing Test Report; MB = Measurement Book; QA/QC = Quality Assurance/Quality Control; TOC = Taking-Over Certificate; NC = Non-Conformance; ITP = Inspection and Test Plan; DLP = Defect Liability Period; HDG = Hot-Dip Galvanizing.

6.1.3 Reference Standards

CPWD Specification for Fencing (CPWD-Spec-S-03);
IS 2062:2011 — Hot Rolled Structural Steel;
IS 4826:2023 — Hot Dip Zinc Coatings on Round Steel Wire;
IS 4759:1996 — Hot-Dip Zinc Coatings on Structural Steel Articles;
IS 2629:1985 — Recommended Practice for Hot-Dip Galvanizing;
IS 2633 — Testing of Uniformity of Coating;
IS 6745 — Methods for Determination of Mass of Zinc Coating on Zinc-Coated Iron and Steel Articles;
IS 456:2000 — Plain and Reinforced Concrete;
IS 10262:2019 — Concrete Mix Proportioning;
IS 875 (Part 3):2015 — Code of Practice for Design Loads (Wind);
IS 1893 (Part 1):2016 — Criteria for Earthquake Resistant Design;
IS 800:2007 — General Construction in Steel;
IS 2721:2003 — Galvanized Steel Chain Link Fence Fabric Specification;
IS 278:2009 — Galvanized Steel Barbed Wire;
IS 4454 (Part 1):1975 — Steel Wire for Mechanical Springs;
IS 1786:2008 — High Strength Deformed Steel Bars;
IS 808:1989 — Dimensions for Hot Rolled Steel Sections;
IS 1892:1979 — Subsurface Investigation for Foundations;
IS 2131:1981 — Standard Penetration Test;
IS 3043:2018 — Code of Practice for Earthing;
IS 1161 — Steel Tubes for Structural Purposes;

NABL-accredited laboratory procedures;
relevant state/central environmental & safety regulations.

6.1.4 Applicable Codes & Regulations

CPWD Specifications 2019 (Vol. I & II); CPWD DSR 2023; GFR 2017; Electricity Act 2003 (for earthing); Pollution Control Board (for HDG waste); Labor Laws; Workmen's Compensation Act; CEA Technical Standards 2010.

6.1.5 Contractor's Responsibilities

Complete the works within the stipulated schedule, obtain all statutory approvals, maintain site safety, quality control, documentation, and submit all deliverables listed in Section 6.8.

6.1.6 Employer (LSPDCL) Responsibilities

Provide site access, review/approve drawings and QA documents within the response windows indicated, conduct inspections, issue Taking-Over Certificate (TOC).

6.1.7 Coordination

Coordination with Solar Park EPC contractor, local authority, utility (for earthing), and any other relevant agencies.

6.1.8 Sub-contracting

Allowed only with prior written approval of LSPDCL; subcontractors must comply with all specifications.

6.1.9 Safety, Health & Environment (SHE)

Follow CPWD-SHE Manual, provide PPE, safety signage, emergency plan, waste-management plan for HDG sludge, and comply with applicable COVID-19 guidelines if applicable.

6.1.10 Documentation & Records

All documents (drawings, certificates, test reports, inspection reports, MBs, deviation logs, as-built) must be maintained on-site and submitted in both electronic and hard copies as per Section 6.9.

6.2 Technical Specifications : Chain Link Boundary Fence for ~7500 Mtr.

S. No.	Description	Technical Specification	Remarks
1.	Scope of Work	Chain link fencing consists of ISA 50x50x6mm HDG angle, galvanized steel chain link 4mm dia of 50x50mm opening chain link fixed to angle iron with the help of GI flat and nut/bolts. Eight rows on the 'Y' joint of galvanized intertwined two-strand steel barbed wire 2.24mm dia and barbed with 2mm dia spacing at 75mm. 600mm dia concertina coil on 'Y' joint.	
2	Design Criteria	a. Fencing Post (Y' Joint). GI angle conforming to IS 808:1989 (equal angle ISA 50x50x6mm, weight 4.5 kg/m) of 4.45m long including slant height of 0.65m and 0.75m on either side of the 'Y' neck and weight not less than 4.5 Kg per RM. The vertical height of the fencing post will be 3.50m. The 0.65m slant height portion will be cut and bend to shape with 0.75m slant portion welded to make the 'Y' neck with an internal angle of 78 degree as shown in drawing, The height of the fencing post from the 'Y' neck to the GL is 2.60m and 0.45m shall be embedded below GL. Eight Nos notches with 150mm spacing to the angle both side at the 'Y' neck portion. The vertical portion shall have five	

		<p>holes as shown in drawing for fixing of nuts and bolts at a distance of 600mm centre to centre starting 550mm above from bottom to hold chain link fence, horizontal bar and vertical HDG flat of size 50x5mm of 2.60m long (Every post embedded in RCC M25 grade concrete as per IS 10262:2019) of size 600mm x 600mm x 600mm). Steel shall conform to IS 2062:2011, Grade A, Sub-grade BR (Bare). All steel shall bear ISI mark and be accompanied by Manufacturer's Lab Test Certificate.</p>	
		<p>b. Strut Post. HDG (Hot-dip galvanized) angle 50x50x6mm of 3.10m length having weight not less than 4.50Kg per RM, will be provided to support vertical post on inner side of fence at every 6th pole /corners/change of direction as per the site requirement (i.e., at a maximum interval of 15 m in straight runs). A vertical piece of angle of length 200mm will be bending at the top of strut as shown in drawing, including making two Nos holes of 15mm dia at the top to enable to fix with vertical post with nut & bolts at a distance of 100mm centre to centre starting 50mm from top (Every strut embedded in RCC (M25) of size 600mm x 600mm x 600mm). Steel shall conform to IS 2062:2011, Grade A, Sub-grade BR (Bare).</p> <p>c. Chain Link. Galvanized steel chain link of 4mm dia and mesh size opening of 50mm x 50mm (+or-5mm). The size of single chain link fence fabric shall be 2.6mtr x 14 mtr mesh wire. The galvanized chain link fencing shall be manufactured as per BIS IS 2721:2003. Galvanizing of wire as per IS: 4826. Tensile strength of wire: Min 500N/sqmm. Mandatory tests shall include: adhesion test by Preece test (4 dips) and uniformity test per IS 4826:1979.</p> <p>d. Barbed wire. Galvanized two strand steel barbed wire (line wire) of 2.24mm diameter of wire, barbed with 2mm diameter of wire of 75mm spacing. The barbed wire shall be ISI marked conforming to IS 278:1978 (Reaffirmed 2020), including all current amendments up to Amendment 5. Minimum zinc coating on barbed wire shall be as per IS 278:1978.</p> <p>e. Concertina Coil. 600mm dia concertina coil having weight 9.50 to 10Kg (\pm 5%) and min 50 turns per roll, each roll expandable upto 06 Mtr. The concertina coil shall be manufactured as per IS 4454 (Part 1):1975 for spring-steel round wire, with minimum tensile strength of 1,300 N/mm²; IS 2602 as applicable for barbed tape geometry; and IS 16154 (or manufacturer's GTP approved by the Engineer-in-Charge) for coil dimensions, number of turns, and overall geometry.</p> <p>f. Excavation. Excavation for post holes will be of size 600 mm x 600 mm x 600 mm average depth in soft/hard and dense soil, based on the ground situation.</p> <p>g. Concrete. All vertical posts and struts shall be</p>	

embedded in M20/M25 grade concrete (nominal mix 1:1.5:3 for M20 or design mix per IS 10262:2019), using 20 mm graded stone aggregate (as per IS 383:2016), water-cement ratio not exceeding 0.50, and minimum cement content of 300 kg/m³.

- h. **Fencing TMT Tie Bars.** Chain link fencing for height of 2.6m, fixed to vertical posts with the help of nuts and bolts, as shown in drawing to give support to chain link from sag. Three rows of 12 mm dia TMT bars, Grade Fe 415, conforming to IS 1786:2008, bearing ISI mark, and accompanied by Manufacturer's Mill Test Certificate (MTC). All tie bars shall be hot-dip galvanized after bending, with a minimum coating thickness of 85 µm, as per IS 4759:1996. Provide 50 mm U-bend on both ends of each standard TMT bar for fixing.
- i. **Painting.** All exposed surfaces of GI angle posts, GI struts, and GI poles shall be coated with one coat of zinc-phosphate etch primer conforming to IS 104:2005 applied over the cleaned hot-dip galvanized surface, followed by two coats of synthetic enamel paint (black) conforming to IS 2932:2010 applied over the galvanized surface after proper cleaning to ensure uniform adhesion. The embedded portions of all GI members shall be protected with two coats of high-grade bituminous paint conforming to IS 9862:1981, with a minimum dry film thickness (DFT) of 75 µm per coat to prevent corrosion due to soil contact. Additionally, any 12 mm diameter rod or bracing element used in the fencing system shall receive two coats of aluminum paint on exposed portions, while its bottom embedded portion shall also be coated with two coats of bituminous paint (IS 9862:1981) for enhanced protection.
- j. **Hot-Dip Galvanizing — Standards and Acceptance.** All structural steel members including angle posts, strut posts, flat bars, gate frames, gate pillar pipes and any other fabricated steel element shall be hot-dip galvanized in accordance with IS 4759:1996 (Hot-Dip Zinc Coatings on Structural Steel Articles) and IS 2629:1985. Acceptance testing shall include: (i) coating thickness measurement by calibrated magnetic gauge as per IS 3203; (ii) adhesion by knife test; and (iii) continuity by copper-sulphate dip test (4 dips, 1 minute each) per IS 2633. Contractor shall issue a Galvanizing Test Report (GTP) for each fabrication batch, countersigned by the Engineer-in-Charge or an approved third-party inspector, before any material is transported to site.
- k. **Wind Design Parameters.** All structural members, including fencing posts, strut posts, gate pillars, gate frames, and their foundations, shall be designed to resist wind loads calculated in accordance with IS 875 (Part 3):2015 — Code of Practice for Design Loads (Other than Earthquake) for Buildings and Structures: Wind Loads. The design wind pressure (pd) shall be computed accordingly and submitted as part of the Design Basis Report (DBR) for LSPDCL's review and

approval before commencement of fabrication.

- i. Seismic Design Parameters.** Foundations, particularly gate pillar foundations, shall be checked for horizontal seismic forces in accordance with IS 1893 (Part 1):2016 — Criteria for Earthquake Resistant Design of Structures. Kanpur district falls in Seismic Zone III. Gate pillar foundations with heavy cantilevered mass shall be specifically evaluated per IS 1893 Clause 6.3. All seismic design calculations shall form part of the DBR.
- m. Soil Investigation Requirements.** Soil investigation shall be carried out by the Contractor prior to design, in accordance with IS 1892:1979 — Code of Practice for Subsurface Investigation for Foundations. A minimum of one bore hole per 500 m of fencing alignment shall be sunk, with a minimum of six bore holes across the 7.5 km alignment or as directed by LSPDCL. Bearing capacity of soil shall be established from bore logs and laboratory test results, and shall be submitted in the DBR for LSPDCL's approval. The foundation design (embedment depth, PCC block size, and concrete grade) shall be based on the actual investigated bearing capacity at each section of the fencing alignment.
- n. Field Quality Control and Testing Requirements.** The following mandatory field quality control tests shall be carried out by the Contractor during execution, with test records entered in the Measurement Book (MB) and countersigned by the LSPDCL site representative:
 - a. Concrete Cube Tests:** Minimum 3 cube samples per 10 m³ of concrete placed, or one set per day of pour, whichever governs. Cubes to be tested at 28 days at an NABL-accredited laboratory. Minimum characteristic compressive strength: $f_{ck} = 20 \text{ N/mm}^2$ (M20). Any result below the acceptance criterion shall entail immediate investigation and corrective action.
 - b. HDG Coating Thickness:** Spot-check on minimum 5% of each consignment of galvanized members delivered to site, using a calibrated magnetic gauge. Results to be recorded batch-wise.
 - c. Chain Link Mesh Tension Test:** One mesh tension test per 500 m run of installed fencing, to verify that the mesh is stretched to the specified tension without distortion of aperture.
 - d. Post Pull-out Test:** One pull-out test per 200 posts installed, or one per change in soil type/section, whichever is more. The pull-out resistance shall meet the minimum design pull-out force established in the DBR.
 - e. Earthing Resistance Test:** All earth electrode installations shall be tested for earth resistance per IS 3043:2018 before acceptance. Earth resistance at each electrode shall not exceed 10 Ω .
 - f. All test reports shall be submitted to LSPDCL as part of the QA/QC Dossier before the final Taking-Over Certificate (TOC) is issued.**
- o. Earthing of Boundary Fencing.** The metallic

		boundary fencing system (chain link mesh, angle posts, strut posts, gate frames and all interconnected metallic elements) shall be earthed at regular intervals not exceeding 250 m, in accordance with IS 3043:2018 — Code of Practice for Earthing, and the CEA Technical Standards for Construction of Electrical Plants and Electric Lines (2010). Earth electrodes shall consist of GI pipe 40 mm dia × 3 m long (or as designed in the DBR) driven vertically at each earthing point, connected to the fence frame by 25 mm × 3 mm GI flat strip bonding conductor, clamped with approved earth clamps. The earth resistance at each electrode, measured as per IS 3043:2018, shall not exceed 10 Ω. All earthing shall be completed and tested before the formal handover of the fencing system.	
3.	Installation & Commissioning	Installation and commissioning at consignee end in accordance with the approved GFC drawings, the design criteria above, and relevant IS provisions and standard engineering practices. All installation activities shall follow detailed procedures including alignment, tensioning, fastening, and quality checks at each stage. The mesh shall be stretched evenly and secured to poles with appropriate fasteners. Posts shall be installed plumb and embedded in the concrete foundation as specified. All works shall be executed by skilled personnel using appropriate tools and equipment.	

Please Note the following points:

- ▶ Details missing, if any, will be assumed to be provided by the supplier as per good engineering practice, and will be approved by inspection team of consignee.
- ▶ All material required for the manufacture of the Security Fence shall be new and shall comply with relevant Bureau of Indian Standard Specifications
- ▶ Execution will be carried out as per IS provision / Standard Engineer practices.
- ▶ In case of any variation in drawing and description, the final decision will rest with the tendering authority.
- ▶ The welding of 100mm overlap at the fencing post 'Y' neck shall be pure edge joint welding on all three external edges. Any other welding in fabrication process shall be edge joint welding only.
- ▶ All Steel members to have ISI mark and should be endorsed with "Manufacturer Lab Test Certificate".
- ▶ The drawings included in Annexure-5 of this Bid Document are indicative/schematic in nature and are marked "Not for Scale — for reference only". They are NOT Good-for-Construction (GFC) drawings. The Contractor shall be responsible for preparing and obtaining LSPDCL approval of a complete set of fully dimensioned GFC drawings — in metric units only — covering all aspects of fence design, post fabrication, foundation detailing, gate arrangement, and earthing layout, before any fabrication or construction commences. All GFC drawings shall comply with IS 962:1989 and CPWD Manual drawing standards.
- ▶ The Contractor shall prepare and obtain LSPDCL approval of a Site Fencing Alignment Layout Plan at a scale of 1:2000 (or as agreed with the Engineer-in-Charge) showing the complete 7.5 km fence alignment with: corner and angle points with co-ordinates (UTM / local grid); gate locations (numbered); strut-post positions; earthing electrode positions at intervals not exceeding 250 m; access road intersection details; and benchmark references. This drawing shall be submitted within Day 0–30 as part of the MDL/DBR package

6.3 SURVEY & APPROVALS

- 6.3.1 Topographic Survey:** Full-fence alignment survey, control points, and stakeout to be submitted as Survey Report within Day 0–30.
- 6.3.2 Soil Investigation:** Bore-hole/Standard Penetration Test (SPT) — laboratory testing by NABL-accredited lab; report to be submitted with DBR. A minimum of one bore hole per 500 m of fencing alignment shall be sunk; SPT per IS 2131:1981 at every 1.5 m depth up to 1.5 m below proposed foundation level or as directed by the LSPDCL. [IS 1892:1979, IS 2131:1981]
- 6.3.3 Preliminary Engineering Calculations:** Wind load, earth pressure, tension forces, foundation sizing — per IS 456:2000, IS 875 (Part 3):2015, IS 800:2007 and CPWD guidelines.
- 6.3.4 Design Basis Report (DBR):** Consolidated report incorporating survey, soil, calculations, and design assumptions.
- 6.3.5 General Arrangement Drawings (GFC):** Detailed drawings for Foundations, Posts, Mesh, Gates, Retaining Wall (if any) to be submitted as part of Master Drawing List (MDL). All GFC drawings shall be fully dimensioned in metric (SI) units, drawn to scale, numbered, dated, and bearing approval signatures per IS 962:1989. Reference/schematic drawings (marked 'Not for Scale') are NOT acceptable for construction.
- 6.3.6 PERT/CPM (Level-3) Schedule:** Critical path schedule covering all activities from fabrication to commissioning.
- 6.3.7 LSPDCL Review & Approval Windows:** Initial review — 10 days; Contractor revision — 5 days; LSPDCL final approval — 5 days (total 30 days).
- 6.3.8 Drawing Revision Management:** Use 'Revision Block' format; each revision must be dated, signed, and resubmitted within stipulated windows.
- 6.3.9 Acceptance Criteria:** Drawings must be 'Complete, Coordinated and Constructible'. Incomplete/wrong submission is not reviewed. Responsibility for getting drawings approved in 30 days vests with the Contractor.

6.4 MATERIALS

- 6.4.1 Steel — General:** All structural steel members shall conform to IS 2062:2011, Grade A, Sub-grade BR (Bare), fully killed. Tensile strength, elongation, and chemical composition to be certified by manufacturer's Mill Test Certificate (MTC). Angle sections shall conform to IS 808:1989, Equal Angle ISA 50x50x6, weight 4.5 kg/m. Section dimensions shall be verified at source inspection. Structural steel sections to IS 2062 shall be accompanied by manufacturer's mill test certificates. Items covered under mandatory BIS certification (e.g., barbed wire, chain-link wire) shall bear ISI mark with valid license.
- 6.4.2 Angle Posts & Struts:** 50 × 50 × 6 mm (ISA 50x50x6) equal angle, cut to length, drilled, threaded as per drawing. Weight not less than 4.5 kg/m. Grade A as per IS 2062:2011.
- 6.4.3 Gates & Gate Pillars:** Steel CHS sections per drawing, reinforced with stiffeners; surface finish to be hot-dip galvanized. Gate posts: DN 80 pipe, 88.9 mm OD, 4.0 mm thick, conforming to IS 1161 with galvanized steel cap. Intermediate posts: DN 40 pipe, 48.3 mm OD. Outer frame: DN 32 pipe, 42.4 mm OD, 2.3 mm thick. Inner frame: DN 25 pipe, 33.7 mm OD, 2.6 mm thick. All hollow sections per IS 1161 or IS 1239/3589, as applicable.

- 6.4.4 Chain-Link Mesh (Boundary Fencing):** Galvanized steel chain-link of 4.0 mm dia and mesh size opening of 50 mm × 50 mm, [IS 2721:2003 tolerance]. Dimensional tolerances per IS 2721:2003 shall apply. The galvanized chain link fencing shall be manufactured as per IS 2721:2003. Sampling and testing per IS 4826. Preece test (4 dips) for adhesion.
- 6.4.5 Chain-Link Mesh (Main Gate):** Gate chain-link infill shall conform to IS 2721-2003; Class W10 IS 2721:2003 (Reaffirmed 2014) — Galvanized Steel Chain Link Fence Fabric Specification; Knuckle-Knuckle selvedge; Hot-Dip Galvanized, minimum 275 g/m² per IS 4826:2023.
- 6.4.6 Concertina / Barbed Wire:** 600 mm dia concertina coil having weight 9.50 to 10 kg (± 5%) and min 50 turns per roll, each roll expandable up to 6 m. The concertina coil shall be manufactured as per IS codes IS 513, IS 4454 & IS 2602. The concertina coil wire shall conform to IS 4454 (Part 1):1975 for spring-steel round wire, minimum tensile strength 1300 N/mm². Coil dimensions, number of turns and coating shall comply with IS 4454 (Part 1):1975 or manufacturer's GTP approved by Engineer-in-Charge. Galvanized to 275 g/m² minimum.
- 6.4.7 Barbed Wire (Boundary Fencing):** Galvanized two-strand steel barbed wire of IS:278 of 1978 (Third Revision) with amdt No 1 to 4 IS 278:2009 (Reaffirmed 2020), including all current amendments, Type A, with ISI marking as mandated under Steel Wires/Wire Mesh QCO 2024. Line wire dia: 2.24 mm; barbing wire dia: 2.0 mm; barbs at 75 mm spacing. Minimum zinc coating: 230 g/m² as per IS 278 Table 1.
- 6.4.8 Barbed Wire (Main Gate Top):** Top barbed wire on main gates shall be 3-strand galvanized barbed wire conforming to IS 278:2009 with ISI marking; dia and spacing as specified in approved GFC drawings.
- 6.4.9 Concrete — Foundations (Posts & Struts):** Grade not less than M20, conforming to IS 456:2000, design mix per IS 10262:2019. Nominal mix 1:1.5:3 (cement:sand:aggregate) for M20 and mix-design for M25. Water-cement ratio not to exceed 0.50. Minimum cement content 300 kg/m³. Foundation size: 600 × 600 × 600 mm or as per structural design. Cement: OPC 43 grade per IS 8112; aggregates per IS 383.
- 6.4.10 Concrete — Gate Foundations:** Ordinary concrete; Grade not less than M20 (characteristic cube strength 20 MPa at 28 days) as per IS 456:2000.
- 6.4.11 Hot-Dip Galvanizing (HDG):** All fabricated structural steel members (angle posts, flats, gate frames, struts, and supports) shall be hot-dip galvanized after fabrication in accordance with IS 4759:1996 and IS 2629:1985. Minimum average coating thickness: 85 µm (610 g/m²) for sections ≥ 6 mm thick per IS 4759:1996. Acceptance testing: coating thickness by magnetic gauge (IS 3203) or XRF method; adhesion by knife test; continuity by Preece/copper-sulphate test (4 dips, IS 2633). Documentary evidence: Galvanizing Test Report (GTP) for each batch. Minimum coating: 275 g/m² (Z275) measured by XRF or magnetic method per IS 4759.
- 6.4.12 Fasteners & Accessories:** Galvanized bolts, nuts, washers, tensioning devices, gate hinges, locks — conforming to IS 1367 (Hot Dip Galvanized Fasteners) and IS 6610.
- 6.4.13 Earthing Materials:** GI pipe earth electrodes (40 mm dia × 3 m long), GI flat 25 × 3 mm bonding conductor, bonding clamps — as per IS 3043:2018.
- 6.4.14 Fencing TMT Tie Bars:** Rows providing 50 mm U bend on both ends. The high-strength deformed bars, Grade Fe 500 conforming to IS 1786:2008, with manufacturer's Mill Test Certificate (MTC). Bars to bear ISI mark. Fixed at equal vertical spacing along the chain-link height (at approx. 600 mm c/c starting 550 mm above bottom), anchored to posts with 50 mm U-bends and bolted cleats as

detailed in GFC drawings. Bars to be hot-dip galvanized after bending, minimum 85 µm per IS 4759:1996.

6.4.15 Protective Coatings (Post-installation): Two coats of synthetic enamel paint (black) applied over the galvanized surface. Over cleaned and prepared HDG surfaces, apply one coat of zinc-phosphate etch primer conforming to IS 104:2005 (or red-oxide zinc chromate primer as per CPWD Specifications 2019, Vol. I) followed by two coats of synthetic enamel paint conforming to IS 2932:2010, of approved shade (black or as specified), minimum DFT 25 µm per coat. The embedded portions of all GI members shall be protected with two coats of coal-tar epoxy / bituminous paint conforming to IS 9862:1981, minimum DFT 75 µm per coat. Any 12 mm dia rod or bracing element shall receive one coat of zinc-phosphate primer followed by two coats of aluminum paint on exposed portions per IS 2339:1963 (R 2002), while its embedded portion shall also be coated with two coats of bituminous paint.

6.4.16 Certifications & Test Certificates: Manufacturer's certification, material test reports (MTR), HDG coating certificates (GTP), concrete cube test reports, weld inspection reports, and all NABL-accredited lab certificates shall be submitted to LSPDCL before dispatch / installation.

6.5 FABRICATION & HOT-DIP GALVANIZING

6.5.1 Fabrication Facility: Must be approved by LSPDCL; equipped with CNC cutting, drilling, welding, and inspection facilities.

6.5.2 Fabrication Tolerances: ± 2 mm for length, ± 1 mm for hole position; angular tolerance ≤ 1°.

6.5.3 Welding: SMAW/TIG as per IS 800:2007; pre-weld cleaning, post-weld grinding, visual & NDT of critical joints. The welding of 100 mm overlap at the fencing post 'Y' neck shall be pure edge joint welding on all three external edges. Any other welding in fabrication process shall be edge joint welding only.

6.5.4-Dimensional Inspection: 100% verification of lengths, hole patterns, mesh dimensions prior to galvanizing.

6.5.5 Pre-galvanizing Cleaning: Degreasing, alkaline cleaning, rinsing, pickling, fluxing — per IS 2629:1985.

6.5.6 Galvanizing Process: Continuous immersion in molten zinc bath at 460 ± 10 °C; minimum immersion time as per thickness required per IS 4759:1996.

6.5.7 Coating Verification Tests: (a) Visual inspection — no blisters, runs or unevenness. (b) Coating thickness — XRF, magnetic or gravimetric method, minimum 85 µm / 610 g/m². (c) Adhesion test — tape/knife test per IS 4759. (d) Continuity — Preece test (4 dips) per IS 2633.

6.5.8 Post-galvanizing Inspection & Documentation: Issue Galvanizing Test Report (GTP) for each batch; attach heat-treatment and passivation certificates.

6.5.9 Pre-dispatch Inspection: Contractor to prepare Pre-Dispatch Inspection Checklist (dimensions, coating, NDT reports) and obtain LSPDCL sign-off before loading.

6.5.10 Packing & Marking: Individual components packed in rust-proof covering, labelled with item code, size, quantity, and batch number.

6.6 LOGISTICS, DELIVERY & STORAGE

6.6.1 Delivery Schedule: As per approved PERT/CPM — all fabricated & galvanized items to reach site by Day 31–60.

- 6.6.2 Transportation:** Heavy-duty trucks with tarpaulin covers; route approval from LSPDCL.
- 6.6.3 Unloading & Storage:** Designated secure storage area within the fenced site; ground to be levelled, drained, and protected from rain.
- 6.6.4 Storage Conditions:** Keep steel components under cover; maintain ambient temperature $\leq 35^{\circ}\text{C}$; avoid contact with chemicals; inspect for damage weekly.
- 6.6.5 Material Tracking:** Maintain a Material Receipt Register cross-referenced with MDL and Measurement Book (MB).
- 6.6.6 Inspection on Receipt:** Verify quantity, dimensions, coating thickness; report any discrepancy to LSPDCL within 48 hrs.
- 6.6.7 Handling Equipment:** Forklifts, cranes, lifting lugs — all to comply with IS 800:2007 and CPWD lifting guidelines.
- 6.6.8 Damage Reporting & Replacement:** Any damaged item to be reported, inspected, and replaced at contractor's cost within 5 working days.

6.7 EXECUTION (CONSTRUCTION)

6.7.1 Mobilization & Site Establishment

The Contractor shall erect site office, storage, and welfare facilities to CPWD standards. Install temporary fencing, signage, and safety barriers. Conduct site induction for all personnel. Set up temporary power and water supply.

6.7.2 Earthworks & Foundations

Excavation: to design depth; side-slopes $\leq 1.5:1$; shoring where required. Excavation for post holes shall be 600 mm \times 600 mm \times 600 mm (minimum) in all soil types, to provide working clearance of ≥ 75 mm on all sides for concrete placement and compaction.

PCC 1:4:8 — 100 mm thick bedding concrete for post-footings (lean mix bed only).

Post and Strut Foundations: M20/M25 grade concrete; RCC as per drawing; reinforcement per IS 456, cover ≥ 25 mm. Foundation size: as per structural design/DBR.

Curing: minimum 7 days, water-curing or approved curing compound.

Formwork & Stripping: per CPWD guidelines; inspection before concreting.

Quality Tests: Slump, compressive strength (cubes at 7 & 28 days); 3 cubes per 10 m³ or per day of pour (whichever is less) per IS 456:2000.

Retaining Wall (if any): cut-and-fill, reinforcement, drainage.

6.7.3 Installation of Structural Elements

(a) Fencing Posts — Design Criteria (Y-Joint Post): GI angle 50 \times 50 \times 6 mm of 4.45 m long including slant height of 0.65 m and 0.75 m on either side of the 'Y' neck. The vertical height of the fencing post will be 3.50 m. The 0.65 m slant height portion will be cut and bent to shape with 0.75 m slant portion welded to make the 'Y' neck with an internal angle of 90 degree 78 degrees as shown in GFC drawing. The height of the fencing post from the 'Y' neck to GL is 2.60 m and 0.45 m shall be embedded below GL. Eight notches with 150 mm spacing to the angle both sides at the 'Y' neck portion. The vertical portion shall have five holes at 600 mm c/c starting 550 mm above from bottom for fixing of nuts and

bolts. In case of conflict between text specification and GFC Drawing, the GFC Drawing shall take precedence, subject to Engineer-in-Charge approval.

(b) Strut Post: HDG angle 50×50×6 mm of 3.10 m length, weight not less than 4.50 kg/m, provided to support vertical post on inner side of fence at every 10th pole/corners/change of direction every 6th main post (i.e., at ≤ 15 m spacing), and additionally at all corners, angle changes, and gate locations. Structural adequacy to be demonstrated in DBR for Vb. Embedded in concrete.

(c) Gate Pillar Foundations & Fabricated Gates: install, level, fix hinges & locking mechanisms per GFC drawings.

(d) HDG Coating Verification: repeat coating thickness test on-site for a 5% random sample per IS 3203.

(e) Fixing of Chain-Link Mesh: tensioned, spacing ≤ 2 mm; welded connections inspected. Mesh shall be fixed to vertical posts with the help of nuts and bolts at five fixing points at 600 mm c/c as shown in drawing.

(f) Concertina / Barbed Wire: stretched, anchored with steel spikes; tension and installation as per approved method statement.

(g) Electrical Earthing & Bonding: Connect mesh and gate frames to earth electrode via 25×3 mm GI flat bonding conductor per IS 3043:2018 Cl. 9.3. GI pipe earth electrodes (40 mm dia × 3 m long) at intervals not exceeding 250 m. Earth resistance ≤ 10 Ω, verified before handover.

(h) Periodic QA/QC: daily inspection checklists, Measurement Books (MB), and Non-Conformance (NC) log.

6.7.4 Testing, Commissioning & Handover

(i) **Final Tensioning & Alignment:** verify fence tension and straightness (≤ 10 mm deviation per 10 m length).

(ii) **Gate Operation Test:** open/close cycles, lock-up reliability, hinge smoothness.

(iii) **Concrete Curing & Touch-up Paint:** final cure, paint any exposed concrete.

(iv) **Electrical Earthing Test:** earth resistance measurement per IS 3043:2018; record values in MB.

(v) **Inspection Request:** Contractor submits Joint Inspection Request (JIR) to LSPDCL.

(vi) **LSPDCL Joint Inspection:** to be scheduled within 5 days of JIR.

(vii) **Punch-List:** issued within 3 days; Contractor rectifies within 7 days.

(viii) **Final Acceptance Recommendation:** LSPDCL issues within 3 days post-punch-list clearance.

(ix) **Documentation Submission:** As-Built Drawings (AutoCAD), Deviation Log, Measurement Book, Test Certificates, GTPs, QA/QC Dossier, Final NDT reports.

(x) **Site Cleaning & Demobilization:** removal of temporary works, waste disposal, final site condition photographs.

(xi) **Taking-Over Certificate (TOC):** final document review (10 days); contractor corrections (5 days); TOC issuance within 5 days after satisfactory completion of 1-year maintenance period.

6.8 QUALITY ASSURANCE / QUALITY CONTROL (QA/QC)

- 6.8.1 QA/QC Plan:** Contractor to submit a comprehensive QA/QC Plan (including organisation chart, responsibilities, inspection points, test frequencies) within Day 30.
- 6.8.2 Inspection & Test Plan (ITP):** Detailed ITP covering all items — materials, fabrication, HDG, concrete, installation, and earthing.
- 6.8.3 Minimum Test Frequencies:** (a) **Concrete cubes:** 3 cubes per 10 m³ or per day of pour (IS 456:2000 Cl. 15), (b) **Steel tensile/bend tests for TMT bars:** one set per 20 tonnes per IS 1786:2008, (c) **HDG coating thickness:** spot-check on 5% of each consignment by magnetic gauge (IS 3203) and Preece test (IS 2633), (d) **Chain-link mesh tension test:** one test per 500 m run (IS 2721:2003 Cl. 7), (e) **Post pull-out test:** one test per 200 posts, (f) **Earth resistance:** all electrode installations. All test records to be entered in Measurement Book and submitted with third-party NABL/Govt-accredited lab certificates.
- 6.8.4 LSPDCL Review Windows for QA/QC:** Review of GTPs & QA documents — 7 days; Comments — 3 days; Final approval — 3 days.
- 6.8.5 Non-Conformance (NC) Procedure:** Immediate NC report; corrective action proposal within 48 hrs; LSPDCL response within 72 hrs.
- 6.8.6 Measurement Book (MB):** Daily recording of quantities installed; to be signed by site supervisor and LSPDCL inspector.
- 6.8.7 Laboratory Tests:** All concrete cubes, steel tensile samples, coating thickness samples to be tested at NABL-accredited or Government-approved labs; certificates to be submitted.
- 6.8.8 Third-Party Inspection (if required):** Independent consultant may be appointed by LSPDCL, contractor shall cooperate fully.
- 6.8.9 Documentation Control:** All QA/QC records to be retained for 5 years post-completion and made available for audit.
- ## **6.9 MEASUREMENT & PAYMENT**
- 6.9.1 Basis of Measurement:** Quantities measured as per CPWD Measurement Rules (IS 1200, CPWD-M-03) — linear metres for posts, mesh, gates; cubic metres for concrete; number of items for accessories.
- 6.9.2 Unit Rates:** To be quoted in INR Per Meter unit, rates inclusive of material, labour, transport, taxes, and overheads.
- 6.9.3 Milestone Payments:** Payment should be Process as per clause 2.11 of ITB.
- 6.9.4 Retention:** NA
- 6.9.5 Variation Orders:** Any deviation from approved GFC or DBR must be processed through a Variation Order (VO) approved by LSPDCL per GFR 2017 provisions.
- 6.9.6 Final Account Settlement:** Within 30 days of TOC issuance, after verification of all documents and clearance of punch-list.
- 6.9.7 Liquidity Damage (LD):** If delays extend past Day 180, liquidated damages will be charged '0.5% of the contract value per week of delay, subject to a maximum of 10% of the total contract value, unless Force Majeure is applicable.

6.10 Technical Specification: Main Gates

6.10.1 Scope and General Description

This sub-section covers the complete design, fabrication, hot-dip galvanizing, supply, erection, testing, and commissioning of two heavy-duty double-leaf swing main gates for the 35 MW Kanpur Nagar Solar Park boundary fencing at Village Katar, Tehsil Ghatampur, District Kanpur Nagar (U.P.). The gates shall be of the double-leaf swing type, each gate providing a minimum 6 m clear opening width and 3.5 m height, suitable for the entry and exit of construction and maintenance vehicles. The entire gate assembly including frame, infill mesh, barbed wire topping, posts, hinges, locking arrangement, and concrete foundation shall be executed as a complete unit under this specification.

The detailed technical specifications construction of Main Gate, for 35 MW Kanpur Nagar Solar Power Park is as follows for consideration of the bidders/ contractors at the time of technical bid submission.

6.10.2 Applicable Standards

The design, materials, fabrication, and testing of all gate components shall comply with the following standards, as a minimum:

- IS 2721:2003 (Reaffirmed 2014) — Galvanized Steel Chain Link Fence Fabric Specification. [Replacing AS 1725-2003 (Australian Standard) which is irregular under GFR 2017 Rule 173 and MoF OM dated 28-Mar-2019 — an Indian Standard is available and shall govern]
- IS 1161 — Steel Tubes for Structural Purposes (Grade YST 210 or higher), or IS 1239/IS 3589 as applicable, for gate posts and frame sections.
- IS 2062:2011 — Hot Rolled Medium and High Tensile Structural Steel, Grade A, for any plate/flat elements used in gate construction.
- IS 4759:1996 and IS 2629:1985 — Hot-Dip Galvanizing of structural steel members.
- IS 278:2009 — Galvanized Steel Barbed Wire, for barbed wire topping of the gate.
- IS 456:2000 — Plain and Reinforced Concrete (M20 grade for gate post foundations). Minimum characteristic cube strength 20 MPa at 28 days.
- IS 800:2007 — General Construction in Steel, for structural design of gate frame and bracing.
- IS 875 (Part 3):2015 — Wind Loads; gate frame to be designed for 0.5 kN/m² wind pressure.
- CPWD Specifications 2019 (Vol. II) — Fencing and Gates (for workmanship and installation standards).

6.10.3 Chain-Link Mesh Infill

The gate infill shall consist of galvanized steel chain-link fabric conforming to IS 2721:2003. The mesh shall have a nominal aperture of 50 mm × 50 mm and shall be manufactured from 4.0 mm diameter wire. The mesh shall be of Knuckle-Knuckle selvedge type.

The galvanizing of the mesh wire shall conform to IS 4826:2023, with minimum coating mass of 275 g/m² (Class A) for 4.0 mm wire dia. The mesh shall be tested for dimensional accuracy, tensile strength, wrap test, twist test, bend test, and galvanizing uniformity per IS 2721:2003. ISI marking shall be borne on the mesh roll where mandated under applicable BIS Quality Control Orders.

6.10.4 Gate Posts and Frame Construction

Gate posts shall be of DN 80 pipe (88.9 mm OD × 4.0 mm thick) conforming to IS 1161, hot-dip galvanized per IS 4759:1996 with a galvanized steel protective cap at the top. Intermediate/support posts shall be DN 40 pipe (48.3 mm OD) conforming to IS 1161.

The outer gate frame shall be constructed from DN 32 pipe (42.4 mm OD × 2.3 mm thick) and the inner frame from DN 25 pipe (33.7 mm OD × 2.6 mm thick), both conforming to IS 1161 or IS 1239. All hollow section members shall be hot-dip galvanized after fabrication to a minimum coating thickness of 85 µm (610 g/m²) per IS 4759:1996.

6.10.5 Diagonal Bracing

Each gate leaf shall be provided with diagonal bracing to limit deflection at the free corner. Diagonal bracing shall consist of 50x50x6 mm HDG equal angle (IS 2062:2011) or 38 mm OD GI pipe strut (IS 1161), welded or bolted at junction points, designed to limit deflection at the free corner to L/150 under design wind load of 0.5 kN/m². Turnbuckle may be used if structural calculation in the DBR justifies it. Supporting cable (if used) shall be galvanized steel wire rope to IS 2266:2002, with a minimum factor of safety of 3.0.

6.10.6 Barbed Wire Topping

The top of the gate frame shall be fitted with three strands of galvanized barbed wire conforming to IS 278:2009 with ISI marking as required under Steel Wires/Wire Mesh QCO 2024. The wire shall be galvanized with a minimum zinc coating of 230 g/m² (IS 278 Table 1). Strand and barb wire diameters and barb spacing shall be as specified in the approved GFC drawings.

6.10.7 Locking Mechanism and Gate Hardware

Each gate leaf shall be fitted with a 3-point locking arrangement comprising top bolt, bottom foot bolt, and a central locking bar with provision for a heavy-duty padlock (minimum BIS-marked 50 mm shackle lock conforming to IS 14764 or equivalent). All locking hardware shall be of galvanized steel or equivalent corrosion-resistant material.

Hinges shall be of the heavy-duty butt type, minimum 4 numbers per gate leaf, fabricated from forged steel and hot-dip galvanized. Hinges shall be capable of carrying 1.5 times the dead weight of the gate leaf. A keeper block/stopper shall be provided to retain the gate in the fully open position. All hardware including hinges, stopper bolts, and locking mechanisms shall be accessible for maintenance without dismantling the gate frame.

6.10.8 Gate Post Foundations

Gate post foundations shall be of Grade M20/M25 concrete (characteristic cube strength 20 MPa at 28 days) per IS 456:2000, design mix per IS 10262:2019. Water-cement ratio shall not exceed 0.50. Minimum cement content shall be 300 kg/m³. Foundation dimensions shall be designed to resist gate self-weight, wind load on leaf (0.5 kN/m² per IS 875 Part 3:2015), and seismic loads per IS 1893 (Part 1):2016 (Zone III). Concrete reinforcement, if provided, shall be to IS 456:2000 and bars shall conform to IS 1786:2008.

6.10.9 Skeleton Reinforcement for Foundations

The Contractor shall provide all reinforcement steel required for the fencing foundations in strict conformity with the approved Design Basis Report (DBR), Good-for-Construction (GFC) drawings, and the applicable provisions of IS 456:2000 and IS 1786:2008.

All foundations for vertical posts, struts, and gate pillars shall be cast using M20 or M25 grade concrete, with a minimum block size of 600 mm x 600 mm x 600 mm, unless otherwise modified through approved structural design. Where reinforcement is mandated by design considerations such as soil bearing capacity, lateral loads, wind forces, or pull-out resistance, the Contractor shall provide TMT reinforcement bars of Grade Fe-415, including all ties, stirrups, dowels, and anchorage bars necessary for structural integrity.

The Contractor shall ensure that:

- Minimum cover to reinforcement shall not be less than 25 mm,
- Reinforcement cutting, bending, placing, and tying shall adhere to relevant BIS standards,
- Three rows of 12 mm dia galvanized TMT tie bars shall be provided as specified for fencing support,
- All reinforcement shall be inspected and approved by LSPDCL prior to concreting.

The provision, placement, and approval of reinforcement shall form an integral part of the quoted rates, and no separate compensation shall be admissible unless expressly provided for under a valid Variation Order.

6.10.10 Surface Protection

All steel components of the gate assembly including posts, frames, bracing, and fittings shall be hot-dip galvanized after fabrication in accordance with IS 4759:1996 and IS 2629:1985. Minimum average coating thickness shall be 85 μm (610 g/m^2) for sections ≥ 6 mm thick. Galvanizing shall be verified by magnetic gauge (IS 3203) and Preece test (IS 2633). Any site-welded portions or damaged areas of HDG shall be touched up with zinc-rich paint conforming to IS 6745.

Over prepared HDG surfaces, one coat of zinc-phosphate etch primer per IS 104:2005 followed by two coats of synthetic enamel paint per IS 2932:2010 shall be applied on all exposed surfaces.

6.10.11 Working Space and Construction Clearances

The Contractor shall be responsible for arranging and maintaining all necessary working space, access, temporary supports, and safety clearances required for performing excavation, reinforcement placement, concreting, alignment, and erection activities associated with the fencing works.

While the minimum excavation size for foundations is 600 mm \times 600 mm \times 600 mm, an additional working clearance of not less than 75 mm on all sides shall be provided to ensure compliance with CPWD construction practices for proper ramming, compaction, formwork placement, and concrete pouring.

All costs associated with such ancillary excavation, working space, temporary structures, shoring, barricading, and safe execution of works shall be deemed to be included within the Contractor's quoted rates, and no separate payment shall be made under any circumstances.

The Contractor shall further ensure that all working areas are executed in strict compliance with approved drawings, applicable safety codes, and instructions of the LSPDCL.

6.10.12 Installation and Commissioning

All installation activities shall follow detailed procedures, including alignment, tensioning, fastening, and quality checks at each stage. Gate posts shall be set plumb to within ± 2 mm per metre of height, confirmed by spirit level and plumb bob. The gate frame shall be set to ± 5 mm of the design opening dimensions.

The mesh shall be stretched evenly and secured to the gate frame with appropriate fasteners and binding wire at a maximum spacing of 150 mm along the frame perimeter. Gates shall be installed with proper alignment, ensuring smooth, free operation and secure closure under self-weight.

After installation, a minimum of 10 full open/close operational cycles shall be conducted to demonstrate smooth operation and correct gate-leaf alignment. The locking mechanism shall be tested for all three locking points in each gate leaf. The Contractor shall demonstrate satisfactory operation to the Engineer-in-Charge as part of the commissioning procedure.

The contractor shall ensure all materials are sourced from approved manufacturers, and all installation work is carried out by skilled personnel using appropriate tools and equipment.

6.11 Installation Procedures:

- All installation activities shall follow detailed procedures, including alignment, tensioning, fastening, and quality checks at each stage. The mesh shall be stretched evenly and secured to poles with appropriate fasteners. Gates shall be installed with proper alignment, ensuring smooth operation and secure closure.
- The contractor shall ensure all materials are sourced from approved manufacturers, and all installation work is carried out by skilled personnel using appropriate tools and equipment.

SECTION 7 : APPENDIX AND FORMS

SECTION 7: FORMATS AND ANNEXURE

APENDIX-1: DOCUMENT CHECKLIST

Documents to be attached during online submission of the bid

S. No.	List of Documents	Copy Attached (Yes / No)	Reference Page No.
1	Document Checklist with proper page referencing		
2	Scan Copy of Tender Fee Payment Receipt with UTR ref. no.		
3	Scan Copy of Bid Security / EMD as Bank Guarantee: Annexure-3		
4	Self-attested copy GSTIN		
5	Copy of Firm Registration, Firm Incorporation Certificate, AoA, MoA / Registration Certificate of MSME of Uttar Pradesh		
6	Copy of ESIC and PF registration		
7	Certified copy of the MSME Certificate issued by the concerned District Industries Centre (DIC) (for MSEs)		
8	Self-attested copy of PAN Card		
9	Covering Letter as per: Form-1		
10	Information about the bidding firm as per: Form-2		
11	Declaration by the bidder as per: Form-3		
12	Power of Attorney for Signing Bid as per: Form-4		
13	Authorized Contact Person for the NIB as per: Form-5		
14	Format of No Deviation Certificate: Form-6		
15	Financial Capability Requirement: CA Certificate indicating average minimum annual turnover of during the last three financial years from FY 2022-23 FY 2023-24 & FY 2024-25: Form-7		
16	Financial Capability Requirement: CA Certificate for Net Worth As on 31st March 2025: Form – 8		
17	Technical Capability Requirement: Details of Orders Received and Executed in Last Seven Years: Form-9		
18	Format of Details of Qualified Technical Staff: Form-10		
19	Format of Declaration of Compliance: Form-11		
20	Declaration by the bidder towards non-Blacklisting/ Debars (on non-judicial stamp paper): Form-12		
21	Preliminary Estimate of Cost of Chain Link Fencing Project: Form – 13.1		
22	Format for Bid Security Declaration: Form – 14		

(Signature of Authorized Signatory)

Name

Designation

Company Seal

Form – 1 Format for Covering Letter

Tender Ref. No. **LSPDCL/3/works-35 MW solar Park/2026**

(To be submitted in the official letter head of the company)

To,

The Chairman
Lucknow Solar Power Development Corporation Limited
3rd Floor, UPNEDA Building, Vibhuti Khant,
Gomti Nagar, Lucknow – 226010 (U.P.)
Email: lspdcl2015@gmail.com

Subject : Work of Chain – Link Fencing Across the Boundary of 35 MW Kanpur Nagar Solar Park at village Katar Tehsil Ghatampur District Kanpur Nagar (U.P.).

Dear Sir,

We, the undersigned....[insert name of the 'Bidder'] having read, examined and understood in detail the BID Document of Tender Ref. No. **LSPDCL/3/works-35 MW solar Park/2026** for **Work Chain – Link Fencing Boundary For 35 Mw Kanpur Nagar Solar Park At village Katar Tehsil Ghatampur District Kanpur Nagar (U.P.)**, hereby submit our Bid comprising of Price Bid and Techno Commercial Bid.

2. We confirm that neither we nor any of our Parent Company / Affiliate/Ultimate Parent Company has submitted Bid other than this Bid directly or indirectly in response to the aforesaid Bid Document.
3. We give our unconditional acceptance to the Tender Ref. No. **LSPDCL/3/works-35 MW solar Park/2026 dated 2/4/2026** and Bid document attached thereto, issued by LSPDCL as amended. As a token of our acceptance to the Bid document, the same have been initiated by us and enclosed with the bid. We shall ensure that we execute such work as per the provisions of the notified bid document and shall be binding on us.
4. We have submitted the requisite amount of Tender Fee & Bid Security as per the terms and conditions mentioned in this bid document.
5. We have submitted our Price Bid strictly as per terms & conditions of this bid document, without any deviations, conditions and without mentioning any assumptions or notes for the Price Bid in the said format(s). The tender is uploaded on <http://etender.up.nic.in> as per the requirement of the website separately Technical Bid & Financial Bid.

(Signature of Authorized Signatory)

Name

Designation

Company Seal

Form – 2 Information About Bidding Firm

Tender Ref. No. **LSPDCL/3/works-35 MW solar Park/2026**

(To be submitted in the official letter head of the company)

Sl. No.	Particulars	Response
1	Name of Bidder	
2	Address of Bidder with Telephone, Fax, email	
3	Address of the Registered Office	
4	Address of the works	
5	GPS Co-ordinate of Registered Office	
6	GPS Co-ordinate of Factory Campus	
7	Name & Designation of Authorized Signatory for Correspondence	
8	Nature of Firm (Proprietorship/Partnership Nature of Firm (Proprietorship/Partnership	
9	Permanent Account Number (PAN)/TIN (Attach proof)	
10	Firm's Registration Number (Attach proof)	
11	GST Number (Attach proof)	
12	Registration Number of the firm/co. (Copy of Registration Certificate issued by Industry Department)	
13	TIN No.	
14	Other details and remarks, if any	

Your faithfully,

(Signature of Authorized Signatory)

Name

Designation

Company Seal

Form – 3 Declaration by The Bidder

Tender Ref. No. **LSPDCL/3/works-35 MW solar Park/2026**

(To be submitted in the official letter head of the company)

I/We, _____ (hereinafter referred to as “the Bidder”), being desirous of submitting our bid for the Work of Chain – Link Fencing of 35 MW Kanpur Nagar Solar Park at village Katar Tehsil Ghatampur District Kanpur Nagar (U.P.), and having fully understood the scope, nature, and requirements of the work, as well as having carefully examined and accepted all terms, conditions, specifications, instructions, and clauses of the tender document issued by LSPDCL, DO HEREBY SOLEMNLY DECLARE THAT:

1. The Bidder is fully aware of and agrees to abide by all provisions, obligations, and conditions stipulated in the tender document issued by LSPDCL.
2. The Bidder confirms capability and readiness to execute and complete the supply, installation, and commissioning of the chain–link fencing boundary as required.
3. The Bidder accepts all risks, responsibilities, and liabilities directly or indirectly associated with the execution and performance of the contract.
4. The Bidder affirms that no collusion, consultation, or arrangement has been made with any officer/employee of LSPDCL, or with any other bidder, regarding the preparation or submission of this bid.
5. The Bidder declares that no statement, representation, or promise by any person associated with LSPDCL has influenced this bid; the offer is made solely based on the tender terms and documents supplied.
6. The Bidder confirms being financially solvent and capable of meeting all contractual obligations, including timely supply of materials and execution of installation works.
7. The Bidder affirms possessing adequate technical experience, manpower, equipment, and competence to complete the fencing works to the satisfaction of LSPDCL.
8. All information, credentials, certificates, and statements submitted with this tender are true, correct, and complete in every respect.
9. The Bidder is fully conversant with all applicable laws, statutory obligations, regulations, and local conditions of the Municipal, District, State, and Central authorities applicable to the execution of fencing works in Uttar Pradesh.
10. The Bidder confirms that it has not been blacklisted, debarred, or suspended by any Government Department, SNA, PSU, or Government Undertaking in India.
11. This bid and offer shall remain valid for a period of six (06) months/ 180 Days from the date of opening of the tender, as prescribed by LSPDCL.
12. The Bidder gives full assurance to execute the complete scope of work strictly as per technical specifications, safety standards, quality requirements, and conditions laid down by LSPDCL.

13. The Bidder confirms having adequate capacity to supply, transport, and install the required quantity of chain-link fencing material, posts, gates, accessories, and other components within the prescribed project timelines.
14. The Bidder accepts that the Earnest Money Deposit (EMD) shall be liable to forfeiture by LSPDCL if the Bidder fails to sign the contract agreement or commence execution within the stipulated period after issuance of the Letter of Award.
15. The Bidder further confirms that any design, structural detailing, or engineering verification required for fencing works shall be undertaken through qualified experts, and where mandated, the design shall be vetted by reputed technical institutions such as IITs/NITs or equivalent institutions and qualified expert.

Your faithfully,
(Signature of Authorized Signatory)
Name
Designation
Company Seal

Form – 4 Format for Power of Attorney for Bidding Company

Tender Ref. No. **LSPDCL/3/works-35 MW solar Park/2026**

POWER OF ATTORNEY

(To be on non-judicial stamp paper of appropriate value as per Stamp Act relevant to place of execution.)

NOW, THEREFORE, KNOW ALL MEN BY THESE PRESENTS,

We (name and address of the registered office) do hereby constitute, appoint and authorize Mr. / Ms. (Name and residential address) who is Presently employed with us and holding the position of..... as our attorney, to do in our name and on our behalf, all such acts, deeds and things necessary in connection with or incidental to our bid for Tender Ref. No. **LSPDCL/3/works-35 MW solar Park/2026**, dated 2/4/2026 including signing and submission of all documents and providing information / Bids to Lucknow Solar Power Development Corporation Limited, representing us in all matters before [Insert Name], and generally dealing with Lucknow Solar Power Development Corporation Limited in all matters in connection with our bid for the said Project.

We hereby agree to ratify all acts, deeds and things lawfully done by our said attorney pursuant to this Power of Attorney and that all acts, deeds and things done by our aforesaid attorney shall and shall always be deemed to have been done by us.

For:

..... Signature

(Name, Designation and Seal)

Accepted by (Signature)

(Name, Designation and Seal)

(Name, Title and Address of the Attorney)

Note:

- ▶ The mode of execution of the Power of Attorney should be in accordance with the procedure, if any, lay down by the applicable law and the charter documents of the executants (s) and when it is so required the same should be under common seal affixed in accordance with the required procedure.

Form – 5 Authorized Contact Person for the Bid

Tender Ref. No. **LSPDCL/3/works-35 MW solar Park/2026**

[On the letterhead of Bidding Company]

S.No.	Particulars	Response
1	Contact Person name for the Bid	
2	Designation	
3	Contact No. (Phone & Mobile)	
4	Fax No.	
5	e-mail ID	
6	Corresponding address with pin	
7	Remarks	

(Signature of Authorized
Signatory)

Name

Designation

Company Seal

Form – 6 Format of No Deviation Certificate

Tender Ref. No. **LSPDCL/3/works-35 MW solar Park/2026**

[To be submitted on the letterhead of Bidding Company]

Date:

To,
The Chairman ,
Lucknow Solar Power Development Corporation Limited
3rd Floor, UPNEDA Building, Vibhuti Khant,
Gomti Nagar, Lucknow – 226010 (U.P.)
Email: lspdcl2015@gmail.com

Subject : Work of Chain – Link Fencing Across the Boundary of 35 MW Kanpur Nagar Solar Park at village Katar Tehsil Ghatampur District Kanpur Nagar (U.P.).

Dear Sir,

We, _____
(Bidder's name), confirm our acceptance to all terms and conditions mentioned in the Tender Document, and all subsequent clarifications, in totality and withdraw all deviations raised by us, if any.

2. We further acknowledge that any deviation in our submitted tender documents from the prescribed Technical Specifications, General Conditions of Contract (GCC), or Special Conditions of Contract (SCC) shall render our bid liable for rejection.

SEAL AND SIGNATURE OF BIDDER

Date: _____

Form – 7 Format for Financial Requirement – Minimum Average Annual Turnover

Tender Ref. No. **LSPDCL/3/works-35 MW solar Park/2026**

[To be submitted on the letterhead of CA with UDIN]

Date:

To,

The Chairman
Lucknow Solar Power Development Corporation Limited
3rd Floor, UPNEDA Building, Vibhuti Khant,
Gomti Nagar, Lucknow – 226010 (U.P.)
Email: lspdcl2015@gmail.com

Subject : Work of Chain – Link Fencing Across the Boundary of 35 MW Kanpur Nagar Solar Park at village Katar Tehsil Ghatampur District Kanpur Nagar (U.P.).

Sir,

We certify that the [Insert name of Bidding Company/ , as applicable] has an Average Annual Turnover of INR [] (Indian Rupees _____), computed as per instructions in bid document, based on unconsolidated audited annual accounts for the last three (3) immediately preceding financial years FY 2022-23 FY 2023-24 & FY 2024-25 or FY 2023-24, FY 2024-25 & FY 2025-26:

Sl. No.	Financial Year	Turnover (in Rupees)
1		
2		
3		
Average Annual Turnover		

**Signature & Name of the
person authorized by as
per PoA or Board**

Company Rubber Stamp

**(Signature and
Stamp of Statutory
Auditor / chartered
accountant with
UDIN)**

Form – 8 Format for Financial Requirement – Net Worth Certificate
Tender Ref. No. **LSPDCL/3/works-35 MW solar Park/2026**

[To be submitted on the letterhead of CA with UDIN] Date:

To,
The Chairman,
Lucknow Solar Power Development Corporation Limited
3rd Floor, UPNEDA Building, Vibhuti Khant,
Gomti Nagar, Lucknow – 226010 (U.P.)
Email: lspdcl2015@gmail.com

Subject : Work of Chain – Link Fencing Across the Boundary of 35 MW Kanpur Nagar Solar Park at village Katar Tehsil Ghatampur District Kanpur Nagar (U.P.).

Dear Sir,

We hereby certify that [Insert name of Bidding Company / Affiliate / Parent, as applicable] has a Net Worth of INR [] (Indian Rupees [_____]), computed in accordance with the instructions provided in the BID, based on the unconsolidated audited annual financial statements for the period ending 31.03.2025 for which the Bidder seeks qualification.

Particulars	Amount (In Rs.)
Equity Share Capital	
Add: Reserves	
Subtract: Revaluation Reserve	
Subtract: Intangible Assets	
Subtract: Miscellaneous Expenditure to the extent not written off and carried forward losses	
Net Worth as on 31 st March 2025 or 2026	

(Signature & Name of the person authorized by as per PoA or Board)

(Signature and Stamp of Statutory Auditor/chartered accountant with UDIN)

Company Rubber Stamp

Form – 9 Project Experience Requirement

Details of Orders Received and Executed in last Years

Tender Ref. No. **LSPDCL/3/works-35 MW solar Park/2026**

Details of Orders Received & Executed by the Bidder/Contractor with any State Govt. / Central Govt./ Govt. SNA/Govt. Autonomous Body/ Govt. Organization / Govt. Utility/ PSU during Last Seven Years (FY 2022-23, FY 2023-24 & FY 2024-25 or FY 2023-24, FY 2024-25 & FY 2025-26).

Sl. No.	Name of Client (With Name and contact information of contact Person)	Details of Work	Contract Value	Details of Performance / Completion Certificate	Page No. of work order / Purchase order submitted	Page No. of Performance / Completion Certificate Submitted

Your faithfully,
 (Signature of Authorized Signatory)
 Name
 Designation
 Company Seal

Please Provide following supporting Documents for vetting:

- Attach Scan copy of Purchase Orders / Work Order / LOA.
- Attach Scan copy of Certificate of Satisfactory Performance and Commissioning certificate Issued by Concerned Nodal Agency/PSU/ Govt. Organization/Private Organization.
- Separate sheet may be used for giving detailed information in seriatim duly signed with page number. Proof of work order/purchase order/LOA and corresponding performance certificate and Commissioning should be submitted/enclosed in the bid.
- If Performance Certificate/Commissioning certificate is not submitted for any project experience, that project experience shall be not counted for the evaluation.

Form – 10 Details of Technical Employees

Tender Ref. No. LSPDCL/3/works-35 MW solar Park/2026
(on Bidder's Letterhead)

S. No.	Name of Employee	Proposed Position/ Responsible in Technical Proposal	Relevant Qualification	Additional Certificates	Tota Years of Relevant Experience	Remarks
1						
2						
3						
4						
5						

Note: Contractors/ Bidders are recommended to provide the detailed CV/ Resume of proposed Employees alongwith their educational and experience certificate for verification of the candidate's suitability.

Form – 11 Format for Declaration of Compliance

Tender Ref. No. LSPDCL/3/works-35 MW solar Park/2026

(on Bidder's Letterhead)

Date:

To,

The Chairman
Lucknow Solar Power Development Corporation Limited
3rd Floor, UPNEDA Building, Vibhuti Khant,
Gomti Nagar, Lucknow – 226010 (U.P.)
Email: lspdcl2015@gmail.com

Subject : Work of Chain – Link Fencing Across the Boundary of 35 MW Kanpur Nagar Solar Park at village Katar Tehsil Ghatampur District Kanpur Nagar (U.P.).

Dear Sir,

This is to certify that,
I _____, am the duly
authorized signatory appointed on behalf of M/s _____
to submit this Bid. The authorization letter is attached herewith. I agree with all the
terms and conditions set forth in this Tender Document.

2. If awarded the job, the Scope of Work shall also conform to the terms and conditions, as well as specifications indicated in the Tender Document and as finally indicated by the Evaluation Committee.

I further certify that all the information provided in this document is accurate to the best of my knowledge.

Signature: _____

Name: _____

Address: _____

Designation: _____

Organization: _____

Email: _____

Phone: _____

Form – 12 Blacklisting Affidavit

Tender Ref. No. LSPDCL/3/works-35 MW solar Park/2026

(On Non – Judicial Stamp Paper)

Affidavit

I, _____ Director/Partner of M/S _____ with headquarter at _____ being their authorized signatory, do hereby solemnly affirm and declare that M/S _____ has not been suspended / blacklisted / de- barred by any PSU /SNA/ Centra/State Government Departments / Financial Institution / Court in last five financial years (FY 2020-21 to FY 2025-26) and should not have any ongoing litigations related to blacklisting.

I understand that if upon acceptance of our offer dated _____ against LSPDCL Tender No. _____ for _____ (name of work) , any W.O/Contract. is placed upon us, the same is liable to be cancelled if this declaration is found wrong at any subsequent time and further, I understand to compensate the LSPDCL, for the consequences arising out of wrong declaration.

Attested by Notary Public

Validate Print Help

Item Rate BoQ

Tender Inviting Authority: Lucknow Solar Power Development Corporation Limited

Name of Work: Work of Chain – Link Fencing Across the Boundary of 35 MW Kanpur Nagar Solar Park at village Katar Tehsil Ghatampur District Kanpur Nagar (U.P.).

Contract No:

Name of the Bidder/ Bidding Firm / Company :						
<u>PRICE SCHEDULE</u>						
(This BOQ template must not be modified/replaced by the bidder and the same should be uploaded after filling the relevant columns, else the bidder is liable to be rejected for this tender. Bidders are allowed to enter the Bidder Name and Values only)						
NUMBER #	TEXT #	NUMBER #	TEXT #	NUMBER #	NUMBER #	TEXT #
Sl. No.	Item Description	Quantity	Units	BASIC RATE In Figures To be entered by the Bidder Rs. P	TOTAL AMOUNT Without Taxes	TOTAL AMOUNT In Words
1	2	4	5	13	53	55
1	Work of Chain Link Fencing					
1.01	Providing & fixing chain-link fencing with 50x50x6 mm GI angle posts (2.4–3.0 m spacing), 50x6 mm GI flats, 50x50 mm GI chain-link mesh (4 mm dia), 600 mm dia concertina coil, 6 horizontal GI barbed wires (2 mm), RBT/spring-core wire, fasteners, and all related civil & earthwork, complete as per specifications of Bid Document	7500.000	Mtr.		0.00	INR Zero Only
2	Main Gate					
2.01	Providing & fixing MS/GI double-leaf main gate with CHS frame (as per drawing), bracing, hinges, posts, lockable shoot bolts, GI chain-link infill, supporting cables/turbuckles, keeper blocks in PCC, complete with fabrication, welding, galvanizing/painting, installation and alignment as per specifications of Bid Document	2.000	Nos		0.00	INR Zero Only
Total in Figures					0.00	INR Zero Only
Quoted Rate in Words					INR Zero Only	

Form – 13.1 PRELIMINARY ESTIMATE OF COST OF CHAIN LINK FENCING PROJECT

(To be submitted separately for Project)

(Disclaimer: It is to be clarified that the data submitted as part of this Format is for LSPDCL's records only, and will have no bearing on the bidder's claims against Change in Law or any other provisions of the Contract)

Project Name:

Location:

Sr. No.	Particulars	Estimated Cost (in Lakh INR) (in figures)	Estimated Applicable taxes in (%)	Estimate Total Cost in lakh INR figures%
1	50x50x6 GI Angle Post			
2	50x6 GI Flat Strip			
3	50x50mm GI Chain-link mesh (4mm dia)			
4	600mm dia Concertina Coil			
5	GI Barbed wire (2mm)			
6	HD Galvanised (Class W10) AS 1725-2003 compliant; 50 mm pitch; 2.5 mm dia wire; Knuckle–Knuckle selvedge			
7	DN 80 pipe; 88.9 mm OD; 4.0 mm thick; with galvanized steel cap			
8	DN 40 pipe; 48.3 mm OD; 3.6 mm thick; HD Galvanised			
9	DN 32 pipe; 42.4 mm OD; 2.3 mm thick			
10	DN 25 pipe; 33.7 mm OD; 2.6 mm thick			
11	Civil & General Works			
12	Others (Please specify)			

Dated the _____ day of _____, 20....

Thanking you,

We remain,

Yours faithfully,

Name, Designation, Seal and Signature of Authorized Person in whose name Power of Attorney/
Board

Resolution/ Declaration.

Form – 14 Format for Bid Security Declaration

(To be stamped on non judicial stamp paper as per the stamp act of the state where the document is made)

Ref: _____

Date: _____

Subject: Declaration of bid security requirement.

We, _____(insert name of the Bidder) hereby provide this undertaking to LSPDCL, in respect to our response to Bid vide Bid No._____dated_____. We undertake that we will abide by the provisions of the Bid for the activities pertaining to submission of response to Tender, during the bid validity period. We undertake not to withdraw or modify our bid during the bid validity period, in line with provisions of the Tender.

In case we withdraw or modify our response to the Bid during the bid validity period, or violate other provisions of the Tender which make the bid non responsive, we, _____ (insert name of the bidder) including our Parent, Ultimate Parent, and our Affiliates shall be suspended/debarred from participating in upcoming tenders issued by any department of Uttar Pradesh Government for a period of 5 years from the date of default as notified by LSPDCL.

(Name and Signature of the Authorized Signatory

ANNEXURE-1: DELIVERY REPORT FORMAT

Tender Ref. No. LSPDCL/3/works-35 MW solar Park/2026

Name _____ & _____ Designation _____ of
 Consignee.....
 Name _____ of
 Department.....
 Address _____ of
 Department.....

Certified that we have received following materials and handed over to supplier for installation of Grid Connected SPV Power Plants:

Sr. No.	Details of Item	Quantity	Remarks

Signature & Seal of Supplier

Signature of Consignee along with Seal/LSPDCL Official:.....

Date.....

Certificate of LSPDCL Representative

Certified that above-mentioned materials have been inspected as per the specification and handed over to the Supplier at site for installation & commissioning.

Signature & Seal of LSPDCL Representative

ANNEXURE-2: PROJECT COMPLETION CERTIFICATE

Tender Ref. No. LSPDCL/3/works-35 MW solar Park/2026

Certificate of Installation & Commissioning of the Chain – Link Fencing Certificate

This is to certify that Supply and Installation of Chain–Link Fencing Boundary for 35 MW Kanpur Nagar Solar Park at Village Katar, Tehsil Ghatampur, District Kanpur Nagar (U.P.) have been installed and commissioned successfully by M/son Dated..... in Building. The contractor M/S-----has Handed over the Site on dated----- & Dated-----as per LSPDCL requirement.

Signature & Seal of Supplier

Signature of Consignee along with Seal.....

Date.....

Signature & Seal of LSPDCL Representative.....

ANNEXURE-3: Earnest Money Deposit

(to be submitted as BG from any nationalized or scheduled bank in the specified format)

[Duly Notarized on Rs. 100/- Stamp Paper]

(To be on non-judicial stamp paper of appropriate value as per Stamp Act relevant to place of execution.)

In consideration of the (Insert name of the Bidder) submitting the Bid inter alia for Response to NIT for “Chain-Link Fencing Across the Boundary of 35 MW Kanpur Nagar Solar Park at Village Katar, Tehsil Ghatampur, District Kanpur Nagar (U.P.)” against Bid No. **LSPDCL/3/works-35 MW solar Park/2026**, as per specifications given in Scope of Work of the Bid Document for meeting the requirements of LSPDCL, in response to the Bid vide dated, issued by LSPDCL (hereinafter referred to as “LSPDCL”), and such LSPDCL / Procurer(s) agreeing to consider the Bid of (Insert name of the Bidder) as per the terms of the Bid, the (Insert name and address of the Bank issuing the EMD) (hereinafter referred to as the “Guarantor Bank”) hereby agrees unequivocally, irrevocably and unconditionally to pay to LSPDCL or its authorized representative at Lucknow, forthwith on demand in writing from LSPDCL or any of its authorized representatives on behalf of LSPDCL, any amount not exceeding ₹ 5,15,000 (Rupees Five Lakh Fifteen Thousand Only) on behalf of M/s (Insert name of the Bidder).

This guarantee shall be valid and binding on the Guarantor Bank up to and including (Insert Date – EMD Validity: 180 days from the Bid Due Date) LSPDCL / Procurer(s) or its authorized representative shall be entitled to invoke this Guarantee until the above-mentioned date. The Guarantor Bank hereby expressly agrees that it shall not require any proof in addition to the written demand from LSPDCL / Procurer(s) or its authorized representative, made in any format, raised at the address of the Guarantor Bank, in order to make the said payment to LSPDCL / Procurer(s) or its authorized representative.

The Guarantor Bank shall make payment hereunder on first demand without restriction or conditions and notwithstanding any objection, dispute, or protest raised by the Bidder or any other person. The Guarantor Bank shall not require LSPDCL / Procurer(s) to justify invocation of this Bank Guarantee, nor shall it have any recourse against LSPDCL / Procurer(s) regarding any payment made hereunder.

This BANK GUARANTEE shall be interpreted in accordance with the laws of India, and the Courts at Lucknow shall have exclusive jurisdiction.

This BANK GUARANTEE shall not be affected in any manner by reason of merger, amalgamation, restructuring, liquidation, winding up, dissolution or any other change in the constitution of the Guarantor Bank.

This BANK GUARANTEE shall be a primary obligation of the Guarantor Bank, and accordingly, LSPDCL / Procurer(s) or its authorized representative shall not be obliged, before enforcing this BANK GUARANTEE, to take any action in any court or arbitral proceedings against the Bidder.

The Guarantor Bank hereby agrees and acknowledges that LSPDCL / Procurer(s) shall have a right to invoke this Bank Guarantee either in full or in part, as it may deem fit. Notwithstanding anything contained hereinabove, the liability of the Guarantor Bank under this Guarantee is restricted to ₹5,15,000 (Five Lakh Fifteen Thousand Only) and shall remain in full force up to..... (Insert EMD Validity Date).

We are liable to pay the guaranteed amount or any part thereof under this BANK GUARANTEE only if LSPDCL / Procurer(s) or its authorized representative serves upon us a written demand or claim before the validity expires.

IN WITNESS WHEREOF,

The Bank, through its authorized officer, has set its hand and stamp on this day of 20.....

Witness:

1. Name & Address: _____

2. Name & Address: _____

Signature of Authorized Officer:

Name: _____

Designation: _____

For: _____ (Insert Name of Bank)

Banker's _____ Stamp _____ and _____ Full
Address: _____

Dated this day of 20.....

ANNEXURE-4: FORMAT FOR PERFORMANCE BANK GUARANTEE (PBG)

(To be on non-judicial stamp paper of appropriate value as per Stamp Act relevant to place of execution.)

Ref.:

Date:

Bank Guarantee No.:

To,

The Chairman
Lucknow Solar Power Development Corporation Limited
3rd Floor, UPNEDA Building, Vibhuti Khant,
Gomti Nagar, Lucknow – 226010 (U.P.)
Email: lspdcl2015@gmail.com

In consideration of the [*Insert name of the Firm*] submitting the response to Bid/Letter of Award (LoA) for Work of Chain – Link Fencing Across the Boundary of 35 MW Kanpur Nagar Solar Park at village Katar Tehsil Ghatampur District Kanpur Nagar (U.P.). issued by *LSPDCL*. As per the terms of the Bid/Letter of Award, the [insert name & address of bank] hereby agrees unequivocally, irrevocably and unconditionally to pay to *LSPDCL* at [Insert Name of the Place from the address of the *LSPDCL*] forthwith on demand in writing from *LSPDCL* or any Officer authorized by it in this behalf, any amount upto and not exceeding Rupees..... [total value] only, on behalf of M/s [Insert name of Firm applying for Empanelment].

This guarantee shall be valid and binding on this Bank up to and including..... and shall not be terminable by notice or any change in the constitution of the Bank or the term of contract or by any other reasons whatsoever and our liability hereunder shall not be impaired or discharged by any extension of time or variations or alternations made, given, or agreed with or without our knowledge or consent, by or between parties to the respective agreement.

Our liability under this Guarantee is restricted to INR.....

Our Guarantee shall remain in force until..... *LSPDCL* shall be entitled to invoke this Guarantee till [Insert date which is [*Insert the number*] of days after the date in the preceding sentence].

The Guarantor Bank hereby agrees and acknowledges that *LSPDCL* shall have a right to invoke this BANK GUARANTEE in part or in full, as it may deem fit.

The Guarantor Bank hereby expressly agrees that it shall not require any proof in addition to the written demand by *LSPDCL*, made in any format, raised at the above mentioned address of the Guarantor Bank, in order to make the said payment to *LSPDCL*.

The Guarantor Bank shall make payment hereunder on first demand without restriction or conditions and notwithstanding any objection by -----[Insert name of Firm applying for Empanelment]. The Guarantor Bank shall not require LSPDCL to justify the invocation of this BANK GUARANTEE, nor shall the Guarantor Bank have any recourse against LSPDCL in respect of any payment made hereunder.

This BANK GUARANTEE shall be interpreted in accordance with the laws of India and the courts at [*Insert the Name of State/District*] shall have exclusive jurisdiction.

The Guarantor Bank represents that this BANK GUARANTEE has been established in such form and with such content that it is fully enforceable in accordance with its terms as against the Guarantor Bank in the manner provided herein.

This BANK GUARANTEE shall not be affected in any manner by reason of merger, amalgamation, restructurings or any other change in the constitution of the Guarantor Bank.

This Bank Guarantee shall constitute a primary obligation of the Guarantor Bank, and accordingly, LSPDCL shall not be obliged, prior to enforcing this Bank Guarantee, to initiate any action in any court or arbitral proceedings against the Firm applying for the Work of Chain–Link Fencing Across the Boundary of the 35 MW Kanpur Nagar Solar Park at Village Katar, Tehsil Ghatampur, District Kanpur Nagar (U.P.); nor shall LSPDCL be required to make any claim, issue any demand or give any notice to the said Firm, or to enforce any security held by LSPDCL, or to exercise, levy, or enforce any distress, diligence, or other legal process against the Firm applying for the said Work of Chain–Link Fencing.

Notwithstanding anything contained hereinabove, our liability under this Guarantee is restricted to INR..... (INR..... only) and it shall remain in

force until [*Insert date which is [*Insert the number*] of days after the date in the preceding sentence*]. We are liable to pay the guaranteed amount or any part thereof under this Bank Guarantee only if LSPDCL serves upon us a written claim or demand. We undertake to extend the period of this guarantee and confirm to you in writing the extension of time on LSPDCL's request, till such time as may be requested.

As per the RBI Guideline, if required, correspondence for confirmation of this Bank Guarantee shall be made on following address: (Address & Official Email ID of the Supervising Branch/ Office of the BG issuing Branch with name & designation of the officer concerned).

Signature

Name

Power of Attorney No.

For,

..... [*Insert the bank name*]

Banker's Stamp and Full Address.

Dated this day of , 2026

Witness:

1. Signature Name and Address	2. Signature Name and Address
--	--

Notes:

- The Stamp Paper should be in the name of the Executing Bank and of appropriate value.

The Performance Bank Guarantee (PBG) shall be executed by any of the Bank from the List of Banks enclosed as per Annexure.

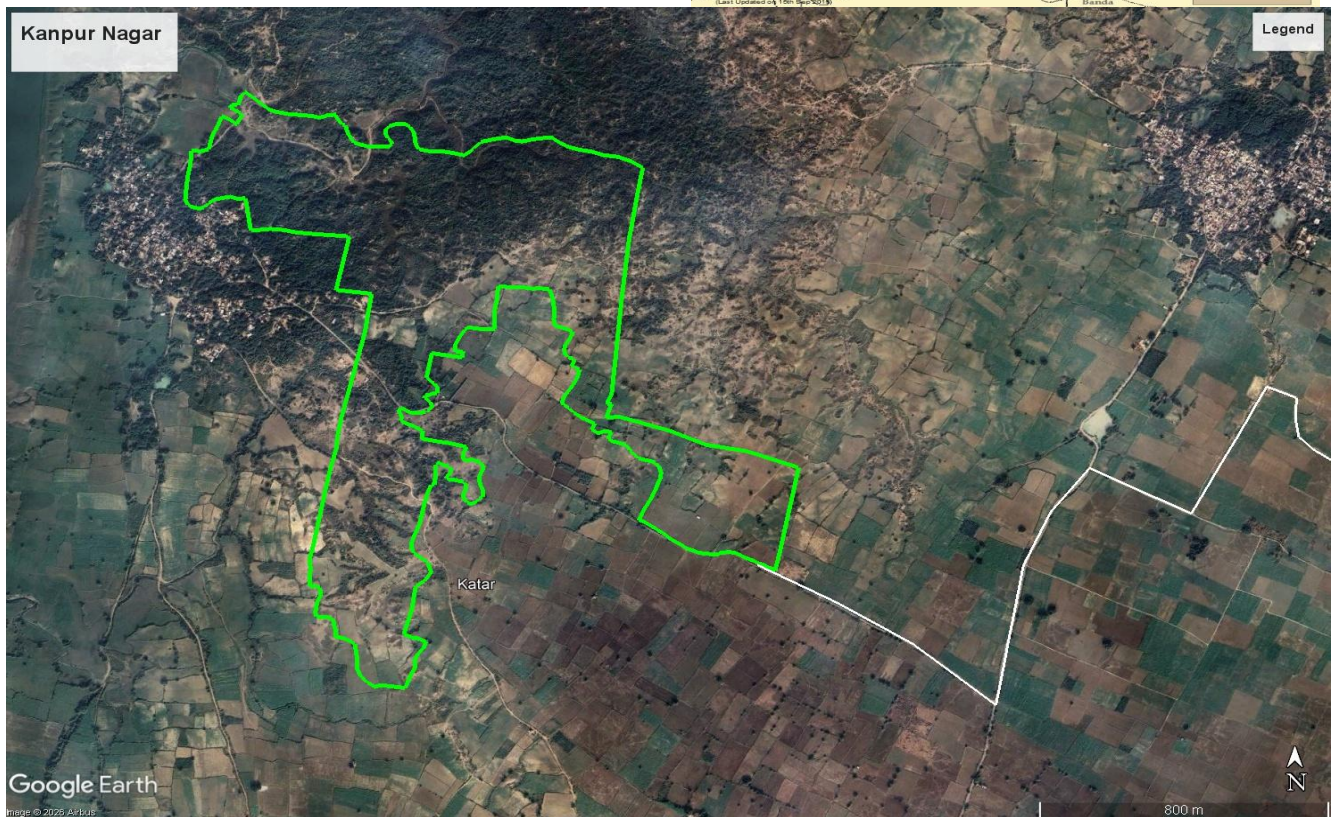
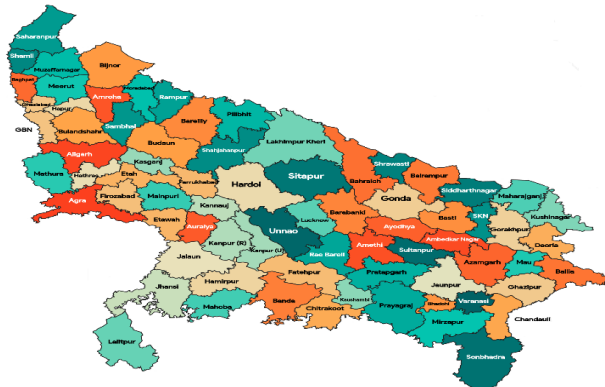
List of Scheduled Commercial Banks as per

Appendix I (Refer to para 2(b) of notification dated April 13, 2020).

PUBLIC SECTOR BANKS		PRIVATE BANKS	
1	State Bank of India	1	Axis Bank Ltd.
2	Bank of Baroda (Including Vijaya Bank and Dena Bank)	2	Catholic Syrian Bank Ltd.
3	Bank of India	3	City Union Bank Ltd.
4	Bank of Maharashtra	4	Development Credit Bank Ltd.
5	Canara Bank (Including Syndicate Bank)	5	Dhanlaxmi Bank Ltd.
6	Central Bank of India	6	Federal Bank Ltd.
7	Indian Bank (Including Allahabad Bank)	7	HDFC Bank Ltd.
8	Indian Overseas Bank	8	ICICI Bank Ltd.
9	Punjab National Bank (including Oriental Bank of Commerce and United Bank of India)	9	IndusInd Bank Ltd.
10	Punjab & Sind Bank	1	Jammu & Kashmir Bank Ltd.
11	Union Bank of India (including Andhra Bank and Corporation Bank)	1 1	Karnataka Bank Ltd.
12	UCO Bank	1	Karur Vysya Bank Ltd.
		1	Kotak Mahindra Bank Ltd.
		1	Lakshmi Vilas Bank Ltd.
		1	Nainital Bank Ltd.
		1	Ratnakar Bank Ltd.
		1	South Indian Bank Ltd.
		1	Tamilnad Mercantile Bank Ltd.
		1	Yes Bank Ltd.
		2	Bandhan Bank
		2	IDFC Bank Ltd.
		2	IDBI Bank Ltd

ANNEXURE-5: PROJECT SITE LOCATION

LSPDCL intends to develop Solar Power Park at Kanpur Nagar, Uttar Pradesh. For which LSPDCL has identified 161.39 acres land parcel for development of the 35 MW solar park in Katar Village, Ghatampur tehsil of Kanpur Nagar district in the state of Uttar Pradesh. The proposed site of solar park is located near the kasba of Katar village which is 1 KM from the site location within the Kanpur Nagar District. The coordinates of the land are 26°7'12.14"N and 79°58'51.60"E. The land identified is government land to be obtained on lease for thirty years under Uttar Pradesh Solar Energy Policy-2022.

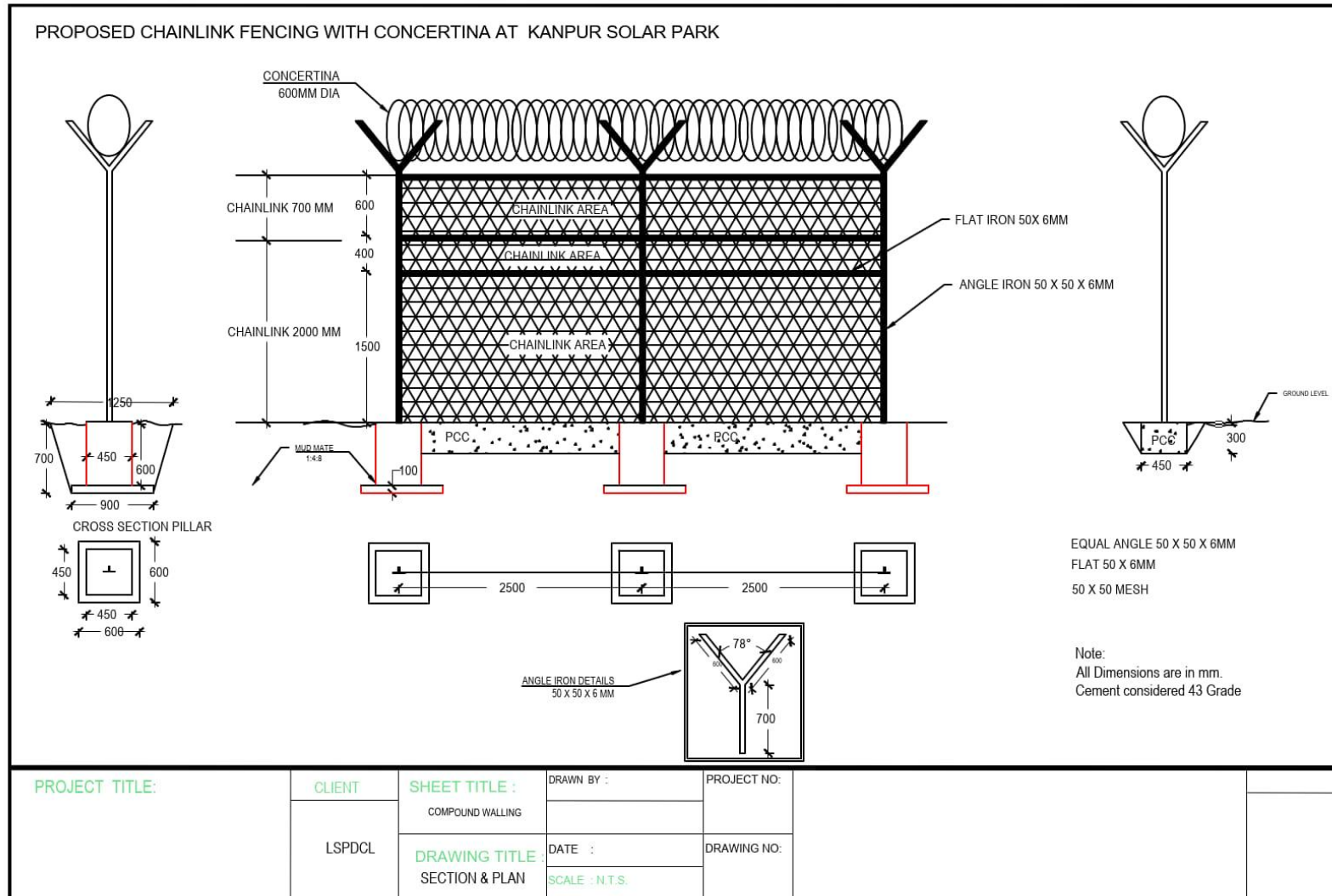


Work of Chain – Link Fencing Across the Boundary of 35 MW Kanpur Nagar Solar Park at village Katar Tehsil Ghatampur District Kanpur Nagar (U.P.).



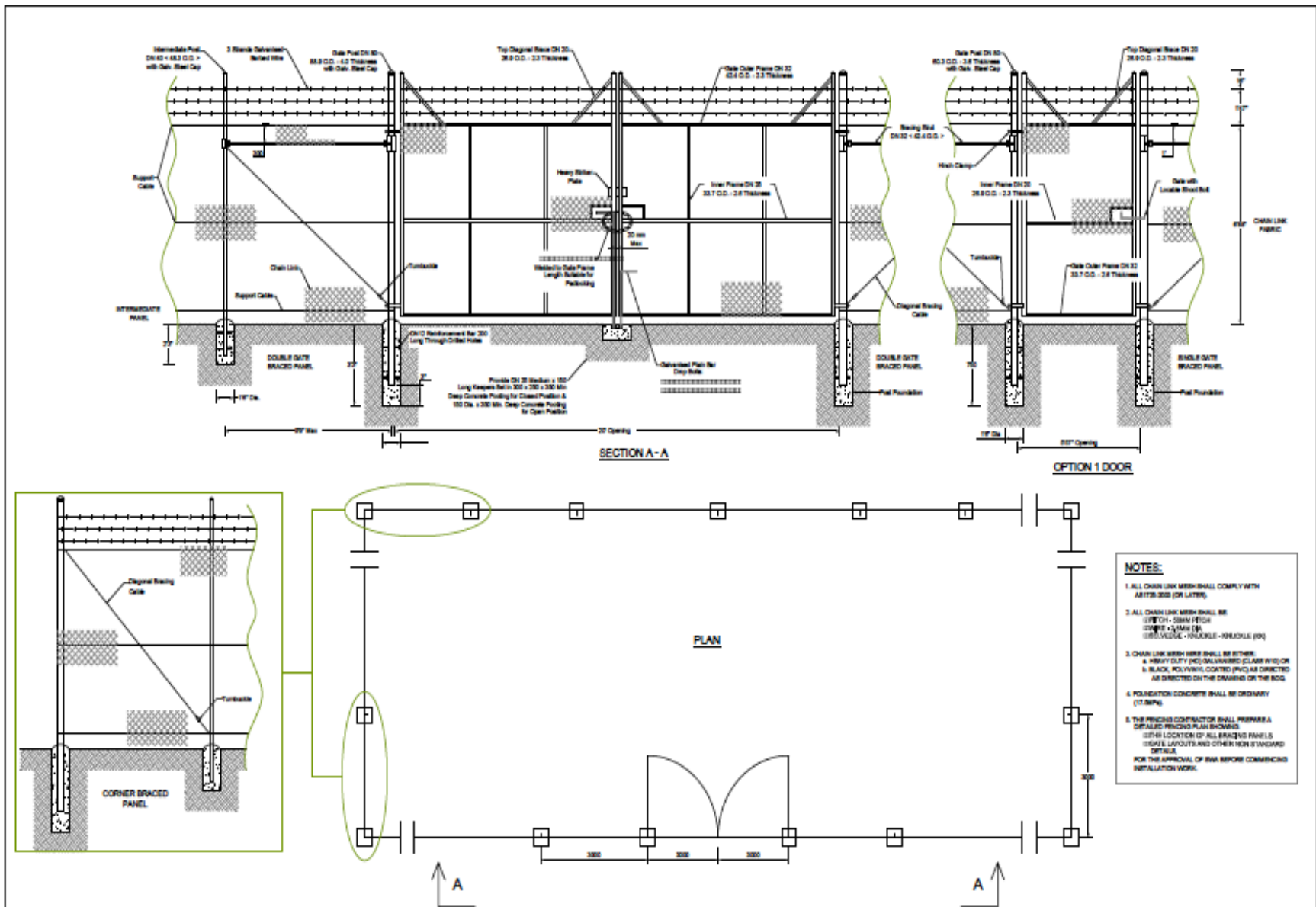
Work of Chain – Link Fencing Across the Boundary of 35 MW Kanpur Nagar Solar Park at village Katar Tehsil Ghatampur District Kanpur Nagar (U.P.).

ANNEXURE-6: DRAWINGS



Not for Scale only for reference

Work of Chain – Link Fencing Across the Boundary of 35 MW Kanpur Nagar Solar Park at village Katar Tehsil Ghatampur District Kanpur Nagar (U.P.).



Not for Scale only for reference